



SPORTS | LEISURE

Regupol®

Equine Products

A cushioned floor covering
designed for horses

Kind to hoofs • long lasting •
economic



BSW

www.berleburger.de

A cushioned floor covering designed for horses

Kind to hoofs · long lasting · economic

Using Regupol®, its well-known branded base material, BSW has developed a range of cushioned floor and wall coverings for the equine sector. Regupol® products provide the animals a permanently elastic base to stand on

which is both insulating and slip resistant. The result is a calming effect which makes them more at ease. Injuries, inflammations and strains are reduced. The noise insulating properties of Regupol® floor coverings make them quiet

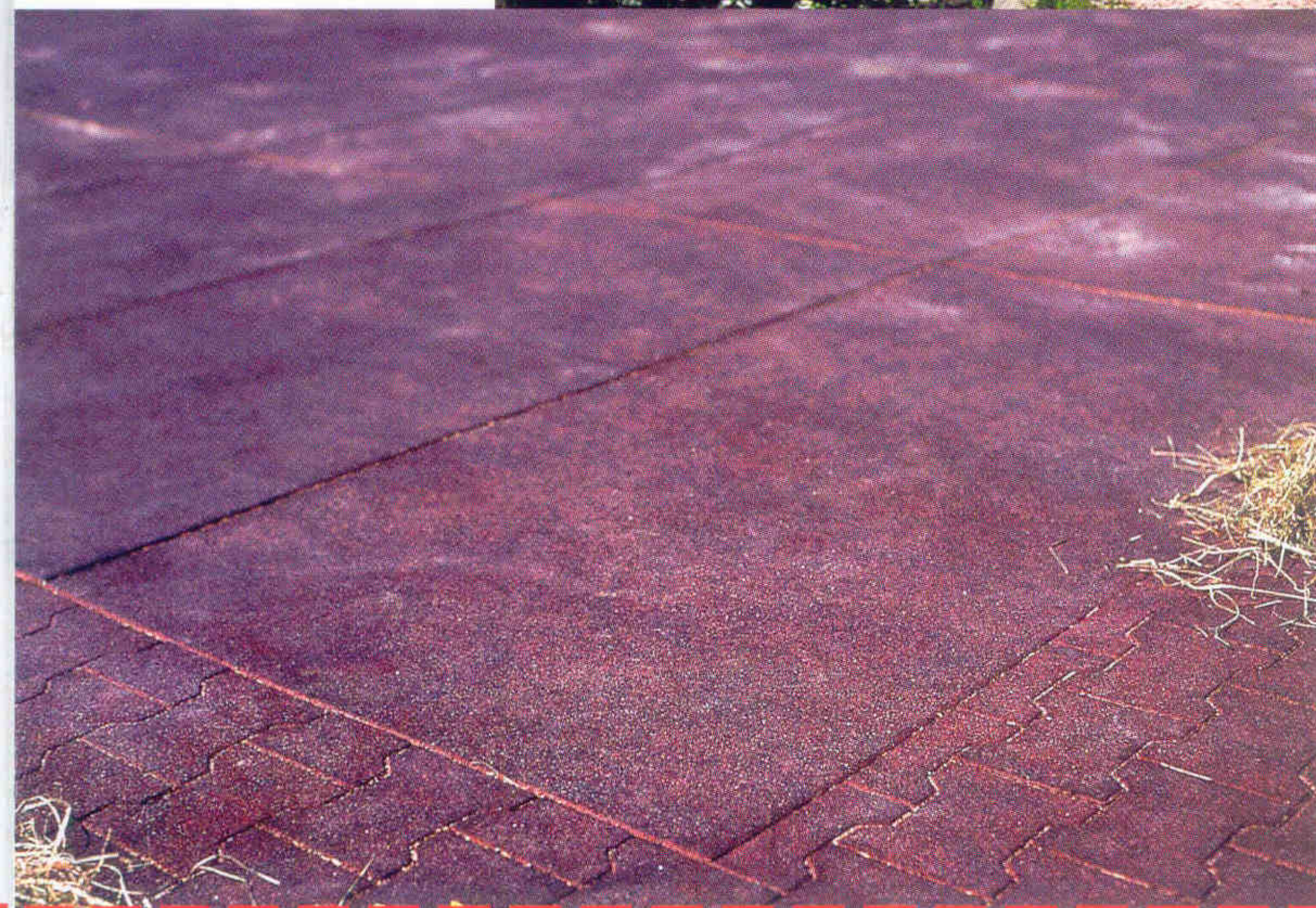
to walk on. The hoofs of unshod horses will not suffer or exhibit any signs of wear. Regupol® floor coverings are the ideal solution for keeping horses in an environment that is suited to their needs, clean and economic.

The Benefits

- kind to the joints
- hoof-friendly
- non-slip
- completely quiet to walk on
- insulate against the cold
- permanently elastic
- reduction in the amount of bedding
- water-permeable
- do not seal the floor surface
- totally frost-resistant
- do not bio-degrade
- easy to lay
- easy to look after
- they look clean
- economic
- can be recycled
- not necessary to have a walk layer



The photos in this brochure show the Eulenmuehle equestrian centre in Ingelheim and the stables of Marion and Bodo Breidenstein, Bad Berleburg. Regupol coverings in stables and outside areas.



Regupol Elastic Tiles and interlocking pavers in the paddock. Walk layer is not necessary.

Regupol Elastic Tiles



Regupol elastic tiles in the dimensions of 1,000 x 500 x 43 mm are used above all as a surface covering in open stables and exercising stables with an open / permeable gravel bed. The tiles are permeable to water and urine. This enables a saving of up to three quarters of the normal amount of bedding required. For horses with breathing illnesses it is also possible to completely do without any bedding. The elastic tiles are easy to clean and in normal day-to-day use they just need to be swept down. Occasionally they can be given a thorough clean with a high-pressure washer. Other possible areas of application are wash bays and barn corridors. In places where there is a risk of injuries or where uneasy and restless horses might kick out it is possible to fix Regupol elastic tiles to the wall. Regupol elastic tiles 2,000 x 1,000 x 43 mm, together with Regupol interlocking pavers provide the ideal covering to paddock areas. The tiles are laid loosely on a flat, frost-resistant permeable gravel bed with edging. A walk layer is not necessary.

This means that this covering is easy to clean and there is never any requirement to change the walk layer.

Colours: redbrown, green, black

Dimensions	Weight
2.000 x 1.000 x 43 mm	app. 35 kg / m ²
1.000 x 500 x 43 mm	app. 35 kg / m ²
1.000 x 500 x 30 mm	app. 24 kg / m ²

False joint every 500 mm

Laying the floor tiles

Loosely onto a compacted, permeable gravel bed (edging elements are required) or loosely onto concrete / asphalt (edging elements and incline required)

To lay as wall covering 1.000 x 500 mm
Screw-fixing to the walls



"Sometimes the horses run at a gallop from the field straight into the stable. There they slow down, without injuring themselves, since the Regupol flooring prevents them from slipping and falling." Marion Breidenstein, horse owner, Bad Berleburg.

Regupol Interlocking Pavers



Regupol Interlocking Pavers VB 43 are designed for use as a surface covering for barn corridors, wash bays, washing areas (external), paddock / exercise, parade yards, walkways. Regupol Interlocking Pavers are water permeable and extremely resilient. They will even withstand being driven over their surface with agricultural machinery. Other advantages are that they are very quiet to walk on, easy to clean and long lasting. When used in a paddock it is not necessary to have a walk layer, which makes this surfacing extremely economical.

Colours: redbrown, green, black

Dimensions	Weight
Interlocking Pavers VB 43 200 x 160 x 43 mm	app. 38,5 kg / m ²
Interlocking Pavers VB 21 200 x 160 x 21 mm	app. 19 kg / m ²

How to lay the Interlocking Pavers

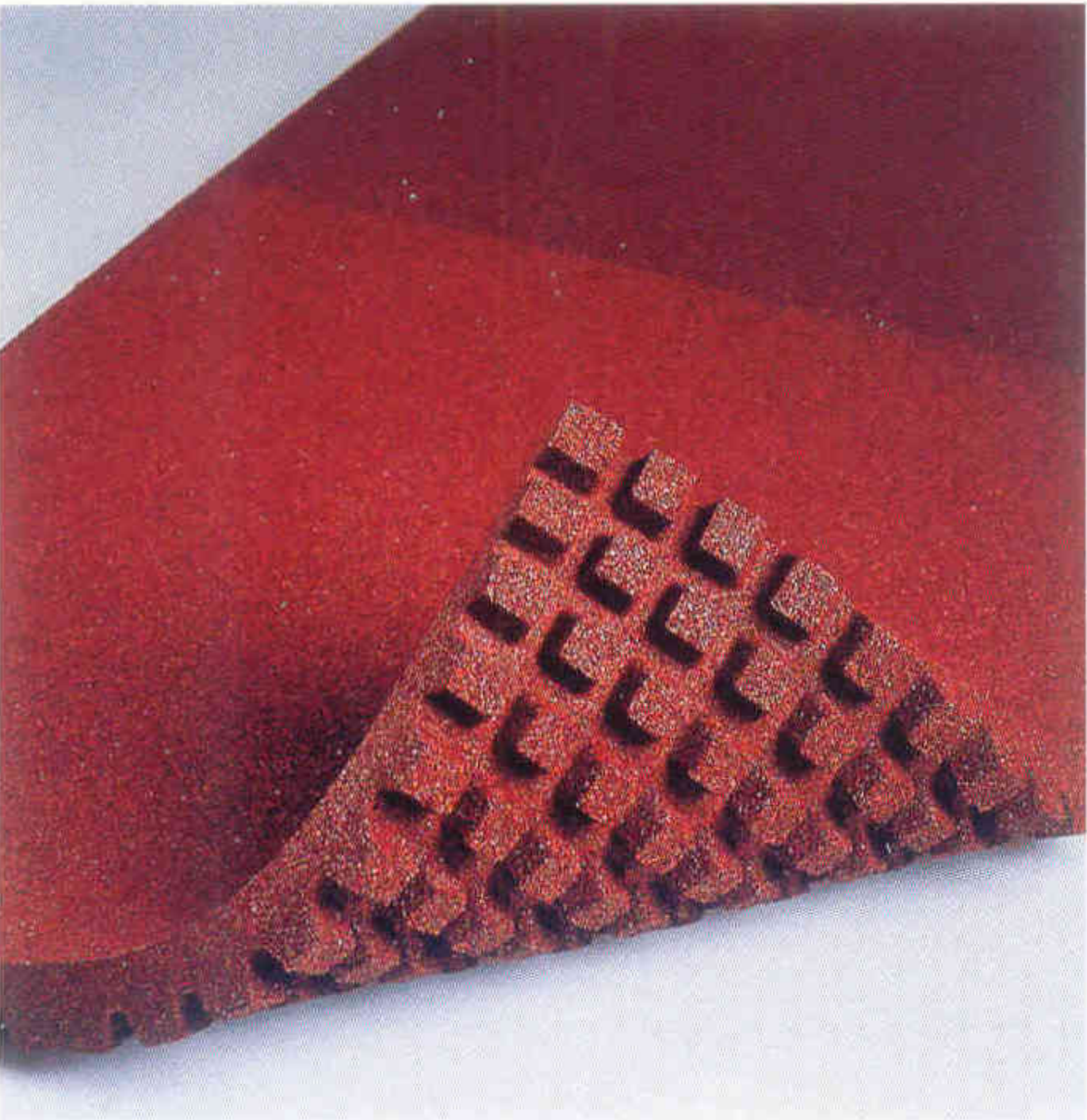
Interlocking Pavers VB 43
As with standard concrete interlocking pavers, the base should be frost-free and consist of a fine gravel top layer. Alternatively they can be laid loose on concrete / asphalt. Edging elements are necessary.

Interlocking Pavers VB 21
Fully surface adhered to concrete / asphalt.



Regupol Interlocking Pavers in the barn corridor.

Regupol Stable Tiles



Regupol Stable Tiles are designed to be used as floor covering in stables, washing bays, washing facilities, open stables or walk ways with a concrete base, incline and drainage. They have underside studs which give them excellent drainage properties – they are permeable to water and urine. In stables this makes it possible to reduce the amount of bedding by as much as three quarters. In cases where horses have breathing illnesses it is possible to completely do without the use of the commonly bedding. Regupol Stable Tiles are easy to clean. Only occasionally will it be necessary to give them a good clean with a high-pressure washer.

Colour: redbrown

Dimensions	Weight
1.000 x 1.000 x 50 mm	app. 36 kg / m ²
which includes a stud height of app. 15 mm	

Laying stable tiles
On concrete or asphalt with a slope of one to two percent towards the drainage point. Edging, drain and drainage systems are necessary.



Regupol Everline - Horseline

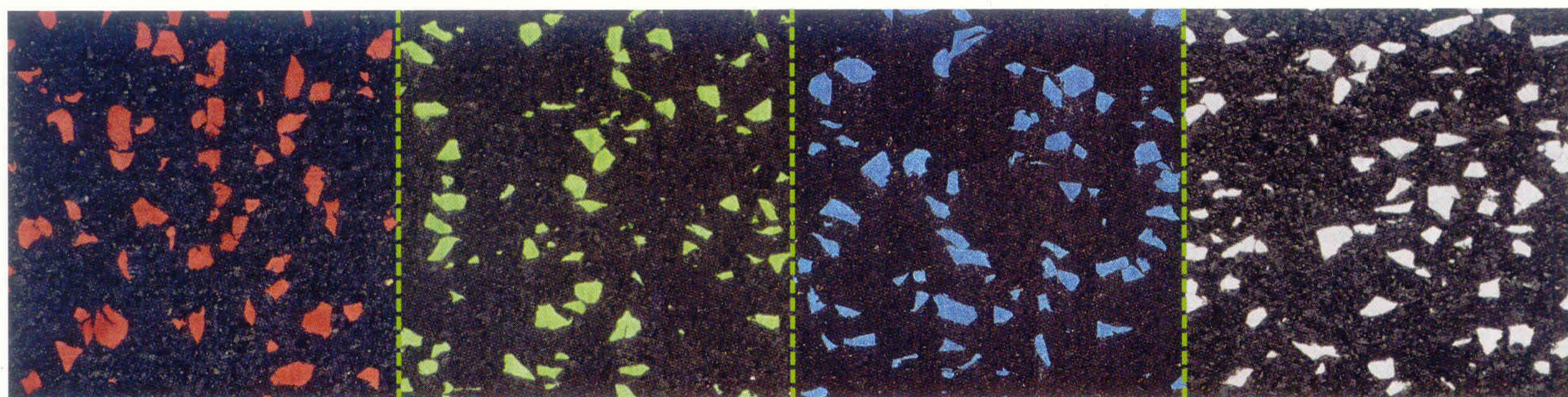
Regupol Everline – Horseline is a cushioned elastic and non-slip floor covering for stall boxes and barn corridors. The covering insulates against noise, provides heat insulation and is kind to the joints. At the same time it is also cost-effective, reducing the amount of bedding required. Regupol Everline – Horseline is adhered to the surface of a flat, dry base.

Dimensions

Width of sheeting: 1,250 mm

Length: to order

Standard thickness: 12 mm
other thicknesses on request.



Black / red*

Black / green*

Black / blue*

Black / grey*

* Original size motif
Colours approximate.

Regupol floor covering for horse trailers

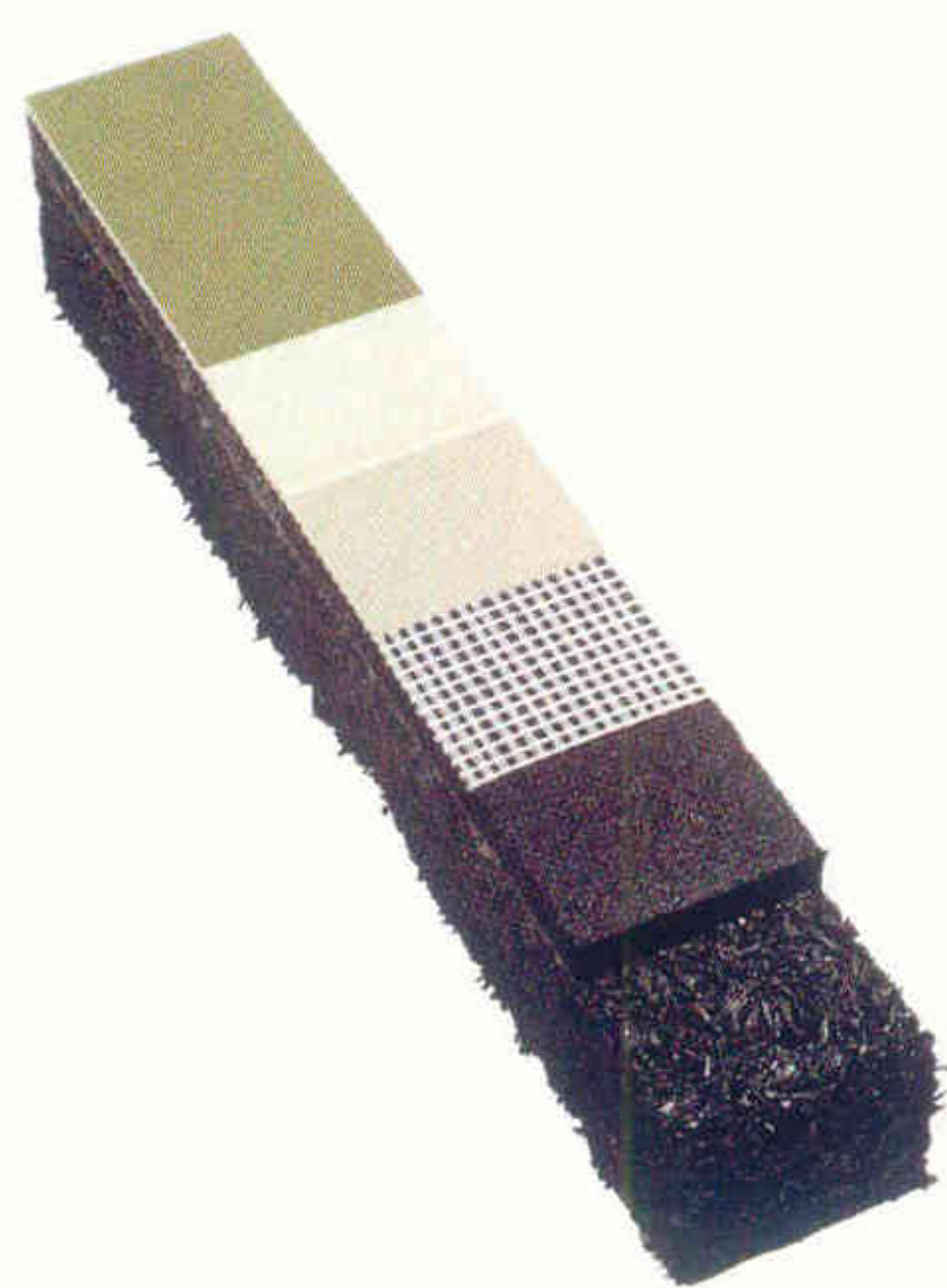
Regupol coverings for the floor of horse trailers have the same non-slip and cushioning qualities as other Regupol equine products. The black mats can be easily cut to size to fit your horse trailer and give horses a secure footing while being transported, reducing the risk of falls and injuries.

In order to avoid bruising, it is also possible to fix them to the walls of the horse trailer. In addition they are also suitable to line the walls of washing facilities and boxes.



"The Regupol products are easy to clean. Horses are happy to play, roll around and lie on them. There are no more ongoing costs to regularly replace the walk layer." Hiltrud Heine, owner of the Eulenmuehle equestrian centre in Ingelheim.

Regupol floor covering for veterinary hospitals



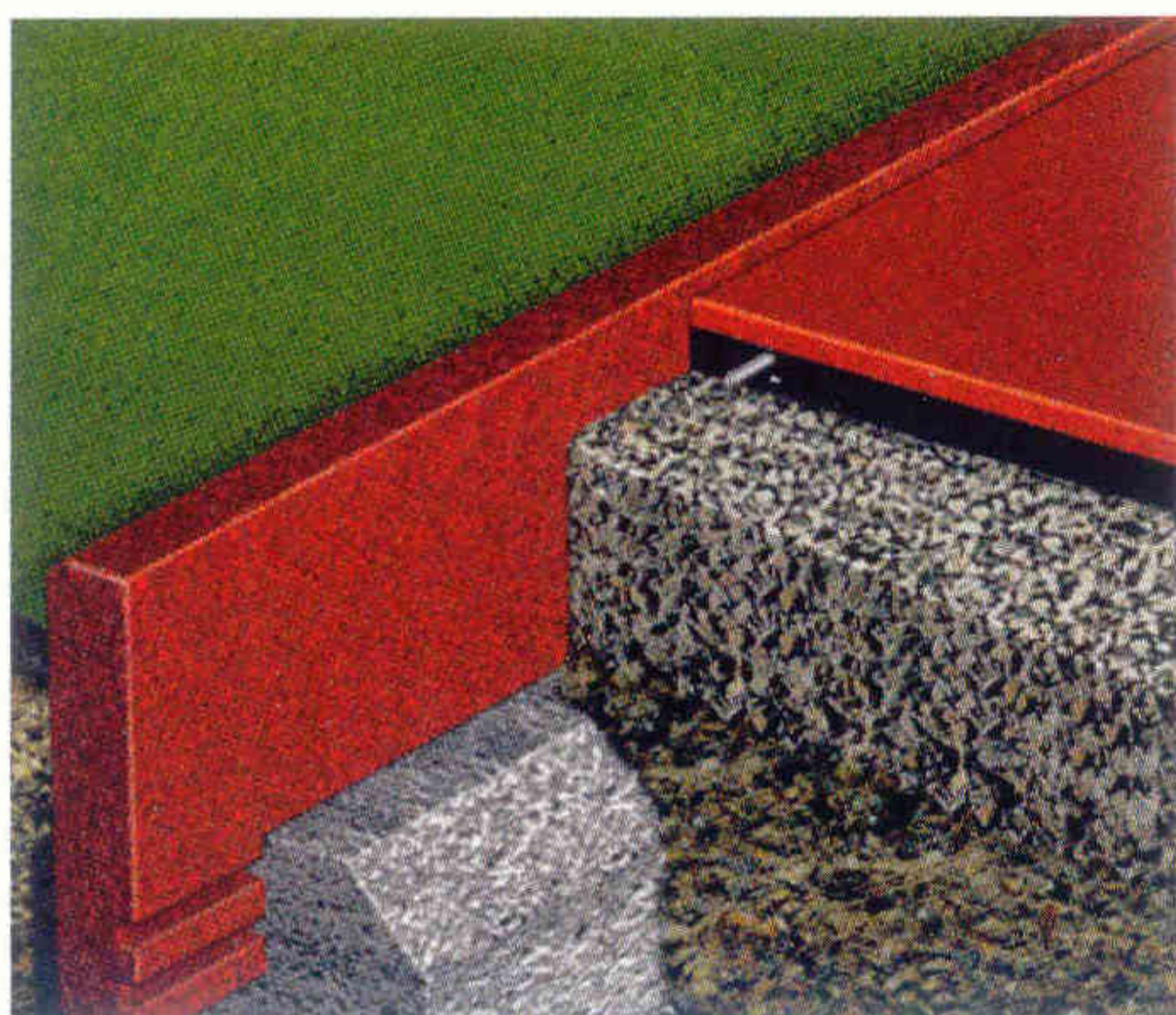
Regupol floor covering for veterinary hospitals has exceptional properties of elasticity and resilience to heavy use. It is made out of a base consisting of Regupol Soft Tiles, a special Regupol sheeting and a fibre mesh to which a seamless PU coating is applied on site. The surface can either be smooth or structured, according to the requirement.

It comes in a thickness of 20 mm for operating rooms and veterinary hospitals (other thicknesses are possible) and 50 mm for the recovery box.

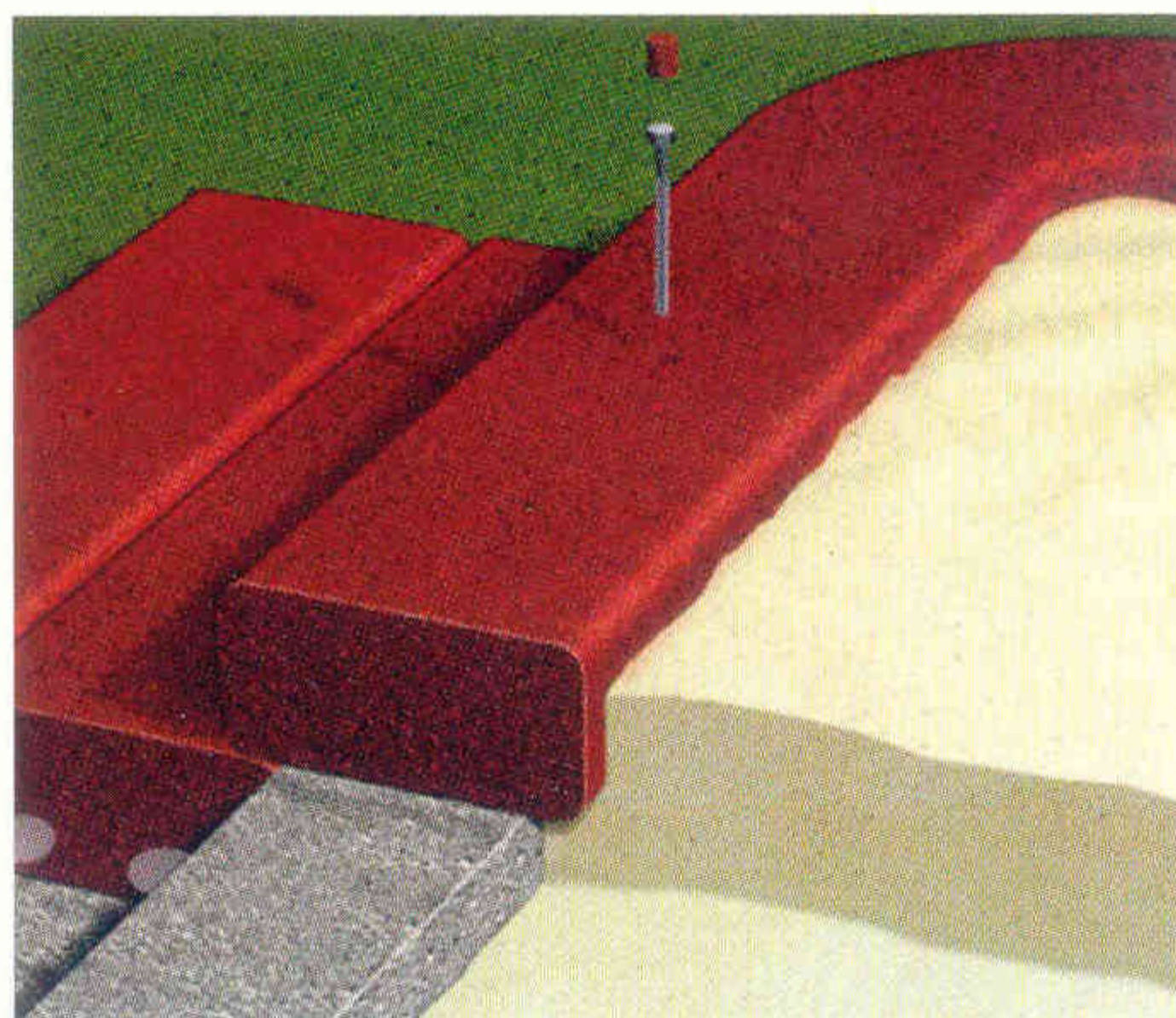
The pore free surface enables cleaning to be intensive, meeting the hygiene demands.

Colours: different colours, full details on request

Regupol Moulded Parts



Regupol edging elements



Regupol step blocks / circular eighth segments

Other components in the Regupol system of coverings for equine applications are moulded parts to provide a border to all different types of surfaces. The Regupol step blocks, edging elements and palisades serve to provide a secure border even to surfaces that are filled.

We would be pleased to provide more detailed information about these products on request.