



SPORTS | LEISURE

Regupol®

Shock Pads

Durable · Consistent · Recognised

Reliable shock attenuation under
artificial turf installations



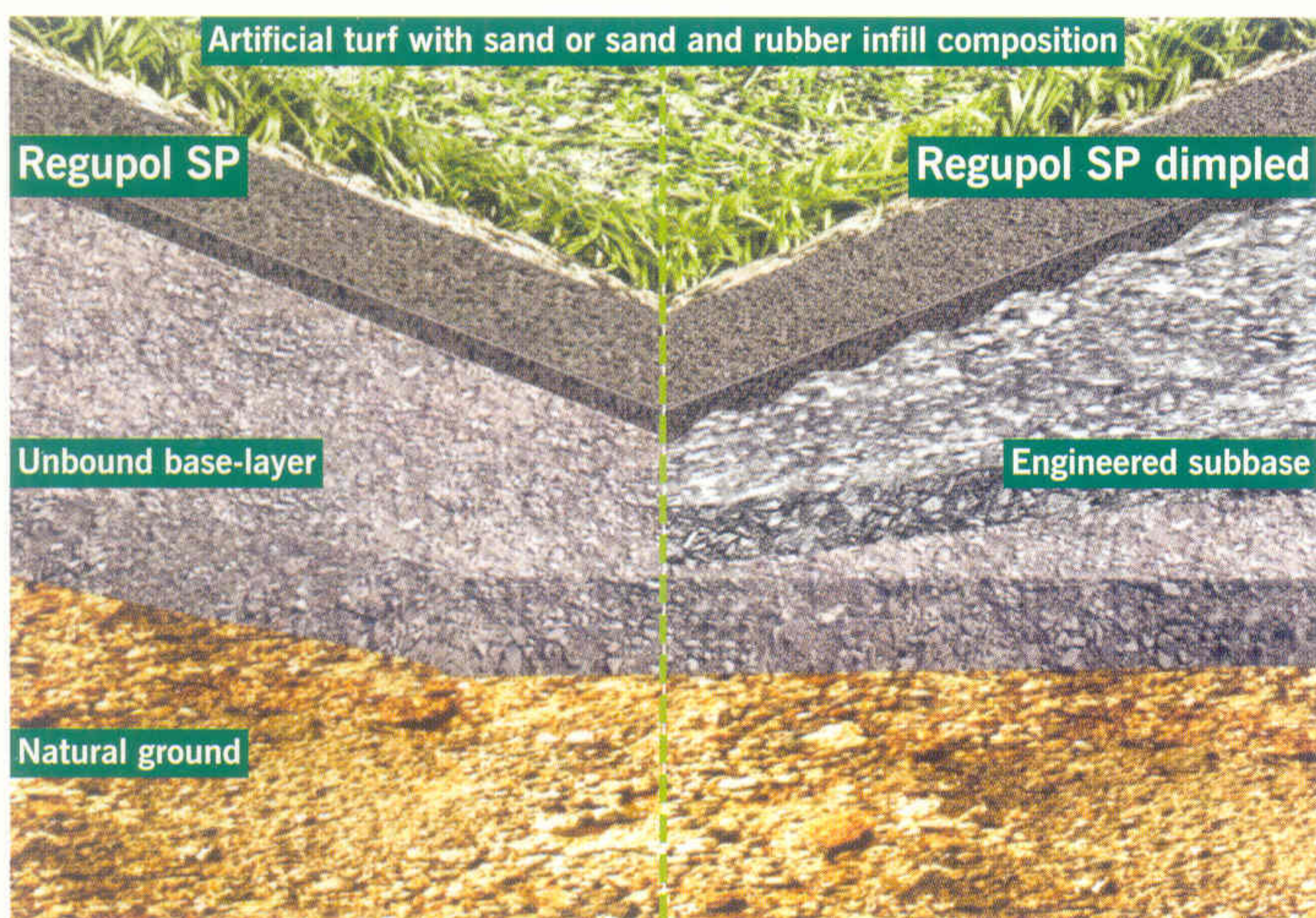
BSW

www.berleburger.de

Artificial turf with sand and rubber infill composition



Regupol SP (prefabricated)



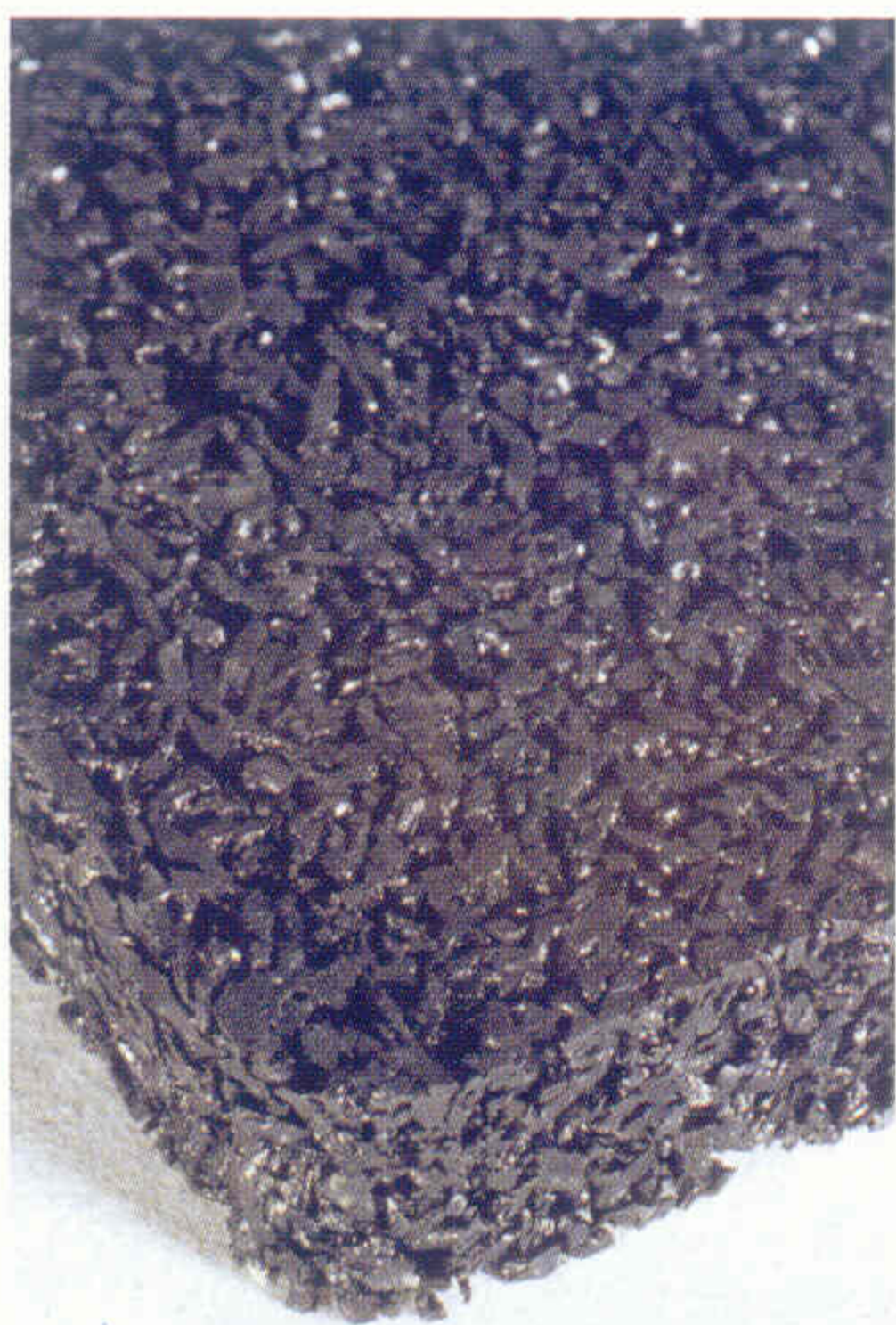
Regupol SP shock pad supplied in prefabricated rolls.

- standard version suitable for installation on unbound subbases
- dimpled (profiled) version suitable for installation on engineered subbases, i.e. asphalt, featuring additional drainage properties

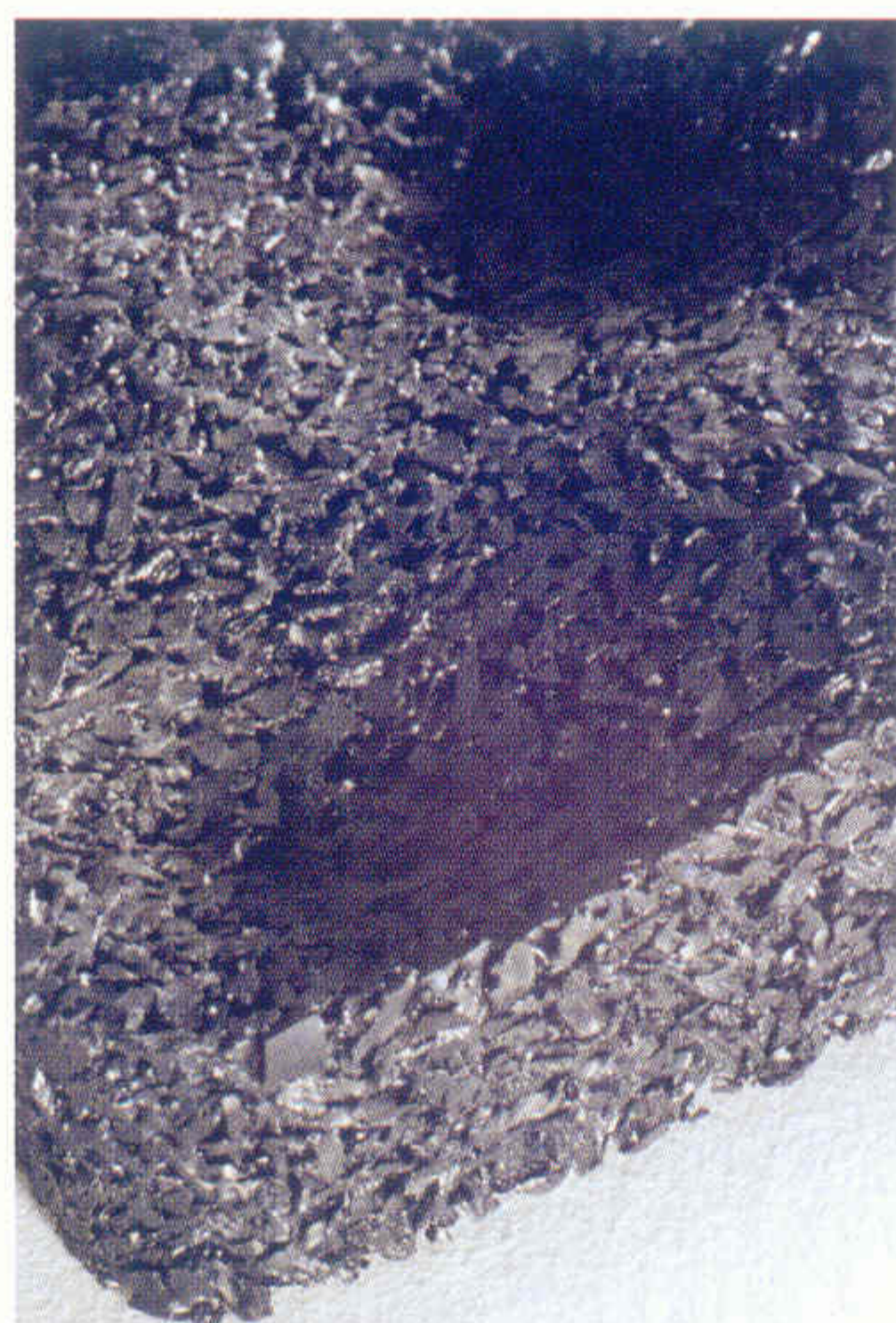
Regupol SP has specifically been developed for the use under artificial turf systems with sand or sand and rubber infill compositions. Regupol SP is versatile and can individually be formulated to meet project specific requirements in regard to shock attenuation. Wherever specific characteristics on ball rebound, force reduction and other cushioning properties are required, Regupol SP is the perfect solution. The proprietary Regupol SP formulation and production process yield density and thickness consistencies that are unique in the sports surfacing industry. Recommended thickness range: 8 – 14 mm, depending on system combination

Features and technical data:

Variable, subject to material composition and thickness. Please refer to our technical data sheets.



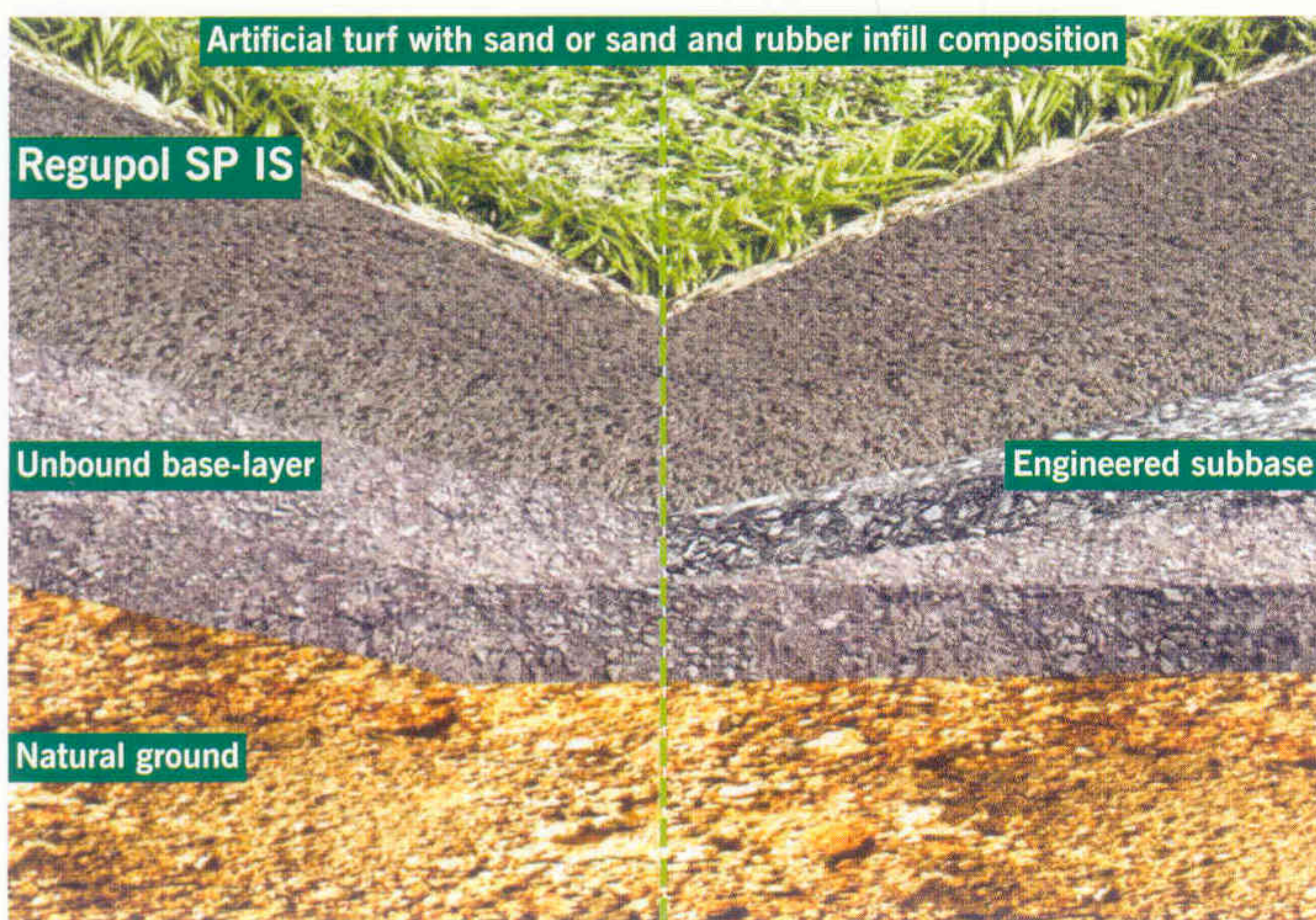
Standard type Regupol SP



Dimpled type shown upside down



Regupol SP IS (in-situ)



Regupol SP IS

Regupol E-Layer

Regupol SP IS is an in-situ type system. In contrast to the prefabricated shock pad, Regupol SP IS is installed on-site by our own technicians and the use of appropriate machinery and paving equipment. The advantages of this process are: an optimal fit of the Regupol SP IS E-layer onto different types of subbases, unique consistency allowing for vertical drainage on dynamic subbases and good shock absorption rating contributing to safe play.

Features and technical data:

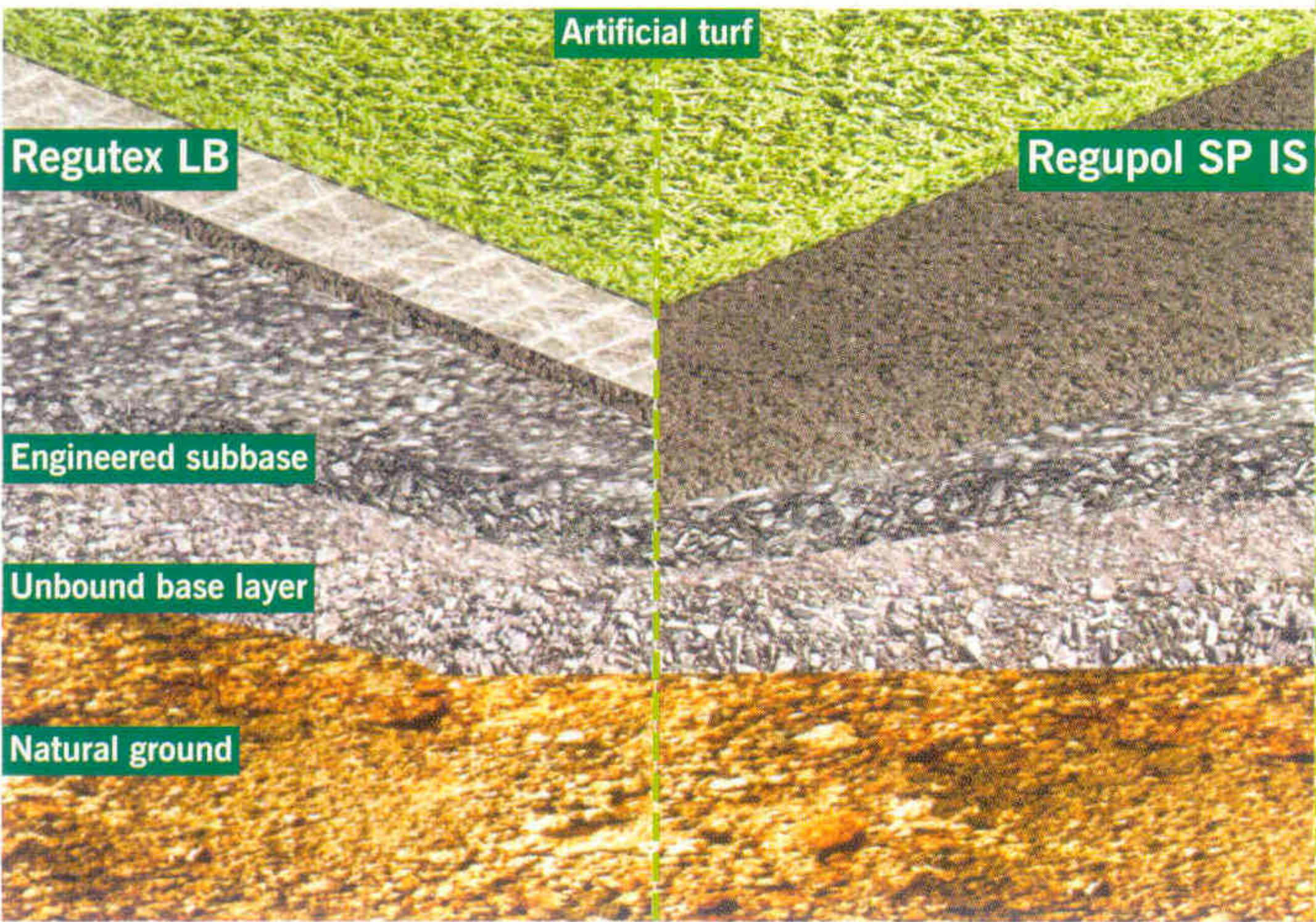
Variable, subject to material composition and thickness. Please refer to our technical data sheets.





Conventional type artificial turf

Regutex LB / Regupol SP IS



Regutex LB supplied in prefabricated rolls made from selected rubber granules and rubber fibres with a special fabric mesh layer laminated onto one side

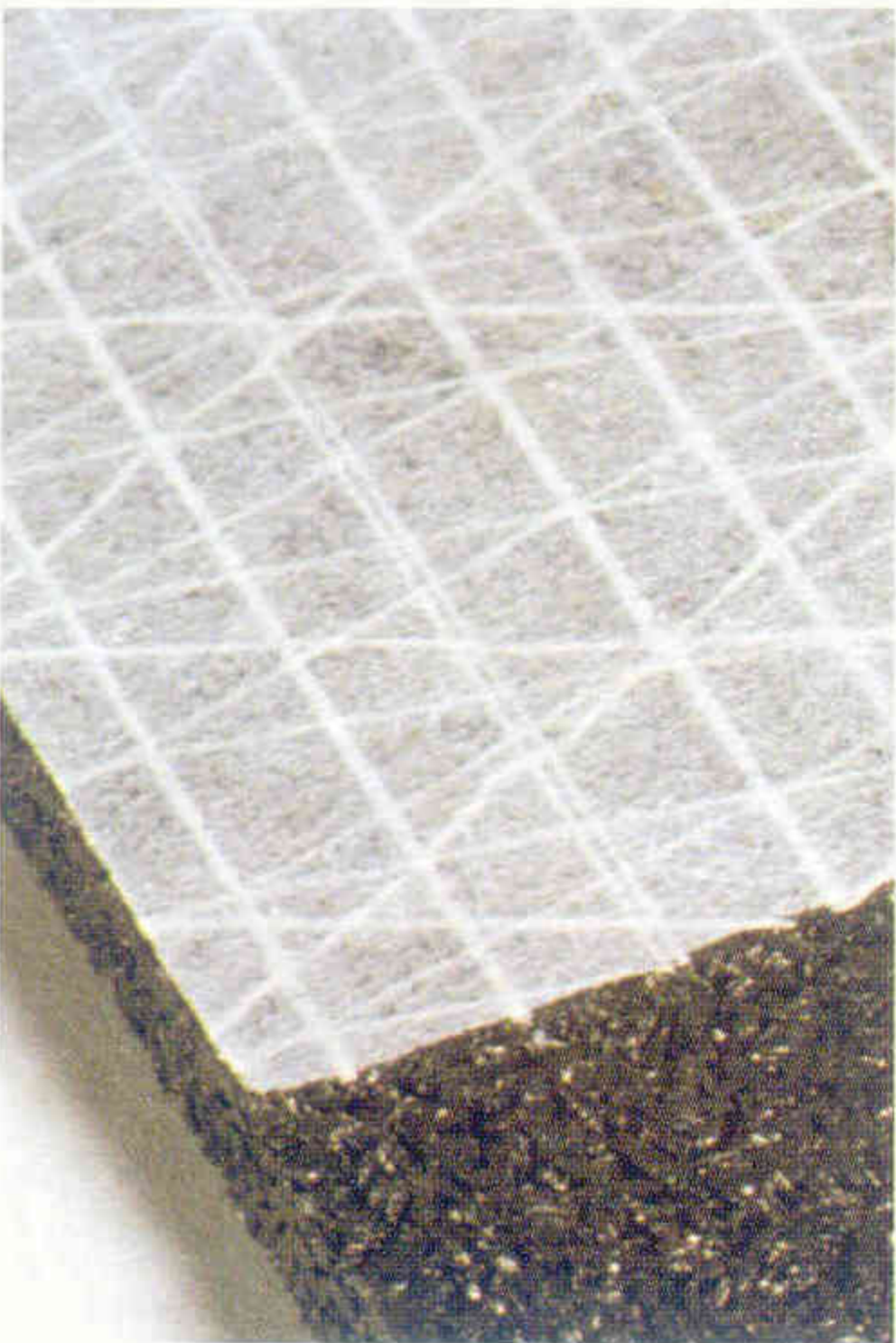
BSW has developed a special version of the standard Regupol SP shock pad with a special fabric mesh layer laminated onto one side for extra dimensional stability. Regutex LB is therefore especially suitable for loose laid applications under conventional turf systems without an infill composition, whereby the seams between the individual rolls are taped with a special seaming tape and adhesive before the artificial turf is installed on top. Regutex LB is, similar to the standard Regupol SP product, available in a thickness range of 8 – 14 mm.

Regupol E-layer

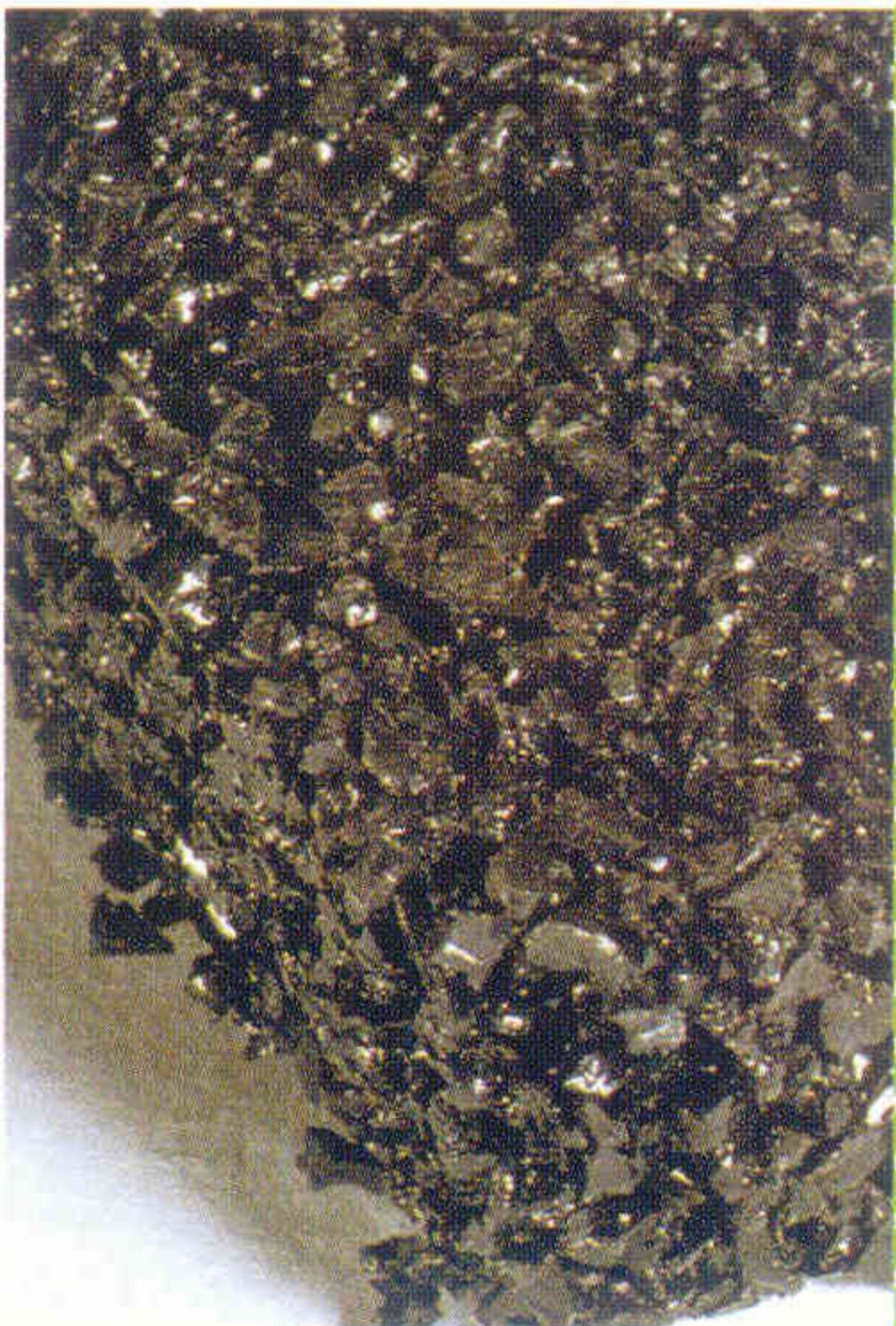
The in-situ type alternative to Regutex LB with the thickness also depending on the type of subbase and the characteristics of the artificial turf material.

Features and technical data:

Variable, subject to material thickness and composition. Please refer to our technical data sheets.



Regutex LB



Regupol SP IS