



SPORTS | LEISURE

Regupol®

Fastrack

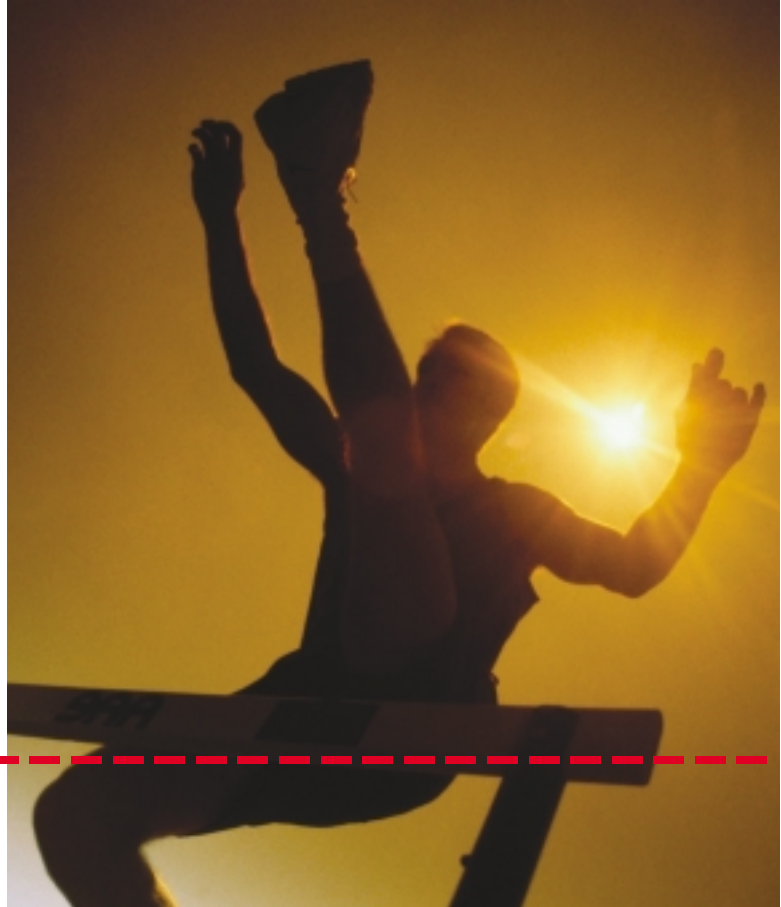
Fast and cost effective

New sports surfacing on
old tracks and courts



www.berleburger.de

Fast and cost effective



New sports surfacing on old tracks and courts

Every old track or game court, specifically dynamic surfaces such as redgrass or shale, must be renewed when they have eventually reached a certain life-span. Such renovations typically require a considerable budget along with a loss of revenue for cancelled training sessions

and competition. The perfect solution in such a situation is the Fastrack system from BSW. New synthetic tracks and courts are built within a short period of time – at price ranges that no other concept can compete with. Fastrack can be installed directly on top of a dynamic

base such as an existing shale track. The necessity for removal and reconstruction of an engineered base is eliminated. Owners and operators of sports facilities realise that a BSW renovation can be carried out extremely fast, with exceptional cost savings.



The fundamental benefits of Fastrack are:

- no necessity to remove the existing base
- reconstruction of an engineered base is not required
- disposal of old materials is not required
- installation of synthetic surface can be completed quickly
- less costly installation procedure
- most inexpensive renovation concept



FASTRACK

Regupol® sports surfacing

provides the owners and operators of sports facilities with:

- fast installations carried out by trained and certified technicians
- permanent quality monitoring during production and installation
- warranty covering manufacturers defects and workmanship
- low maintenance cost
- durability, even under intensive use
- spike resistance
- various surface textures
- multiple areas of application
- water impermeable construction

provides the athletes with:

- optimized level of shock absorbency
- durability
- outstanding slip-resistance
- easy on joints and ligaments
- minimized risk of injuries
- excellent ball bounce
- seamless and homogeneous surface structure
- best conditions for outstanding performances

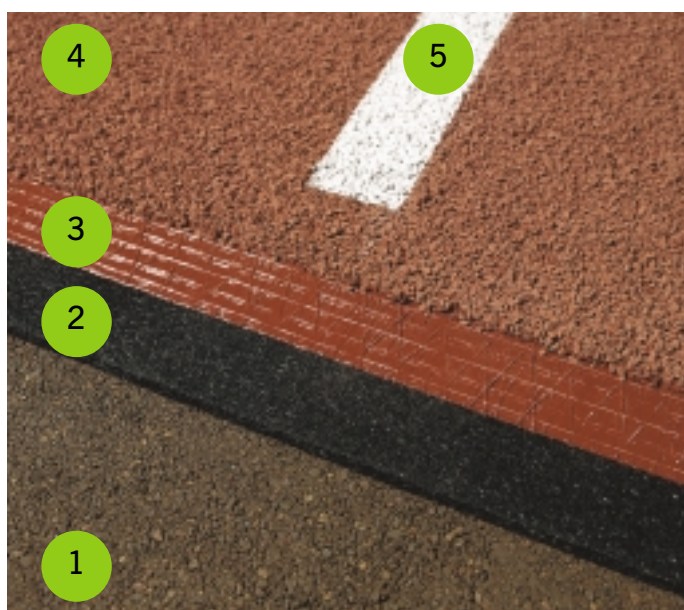


Installation

The Fastrack system from BSW is quickly installed, using a very cost effective method. The finished surface meets highest demands. The base mat is a specially formulated grade of Regupol,

the famous brand successfully manufactured from rubber and polyurethane by BSW for decades. The base mat is prefabricated under very controlled circumstances in our factory

to guarantee a consistent quality and uniform physical properties. The top layer consists of a stabilizing mesh on top of which the PUR/EPDM compound is applied "wet-in-wet".



1. The existing surface is levelled, compacted and the slope is re-adjusted. If required, the drainage system is repaired or renewed.
2. The Regupol® base mat is loose laid on to the dynamic base.
3. The stabilizing mesh is applied on top of the Regupol® base mat and fixed with PUR seal coating.
4. On top of the stabilizing mesh the self-levelling polyurethane coating is applied. Into the freshly poured polyurethane compound special EPDM granules are broadcast to achieve a granulated texture subject to the specifications. Alternatively, a structural spray-coating can be applied on top of the mesh.
5. The next day the lines can be put on to the finished surface.



Regupol®

Berleburger Schaumstoffwerk GmbH (BSW) manufactures a large variety of flooring products for sports, fitness and leisure out of the material called Regupol®. Regupol® is a mixture of rubber and polyurethane. BSW processes the product on its production sites to special requirements

and using a number of different formulations. Regupol products are extremely versatile, durable and completely recyclable; they are custom manufactured to our clients needs. Our packaging and warehousing lead to quick solutions for specific application problems.

The surfacing options



Regupol Fastrack AG

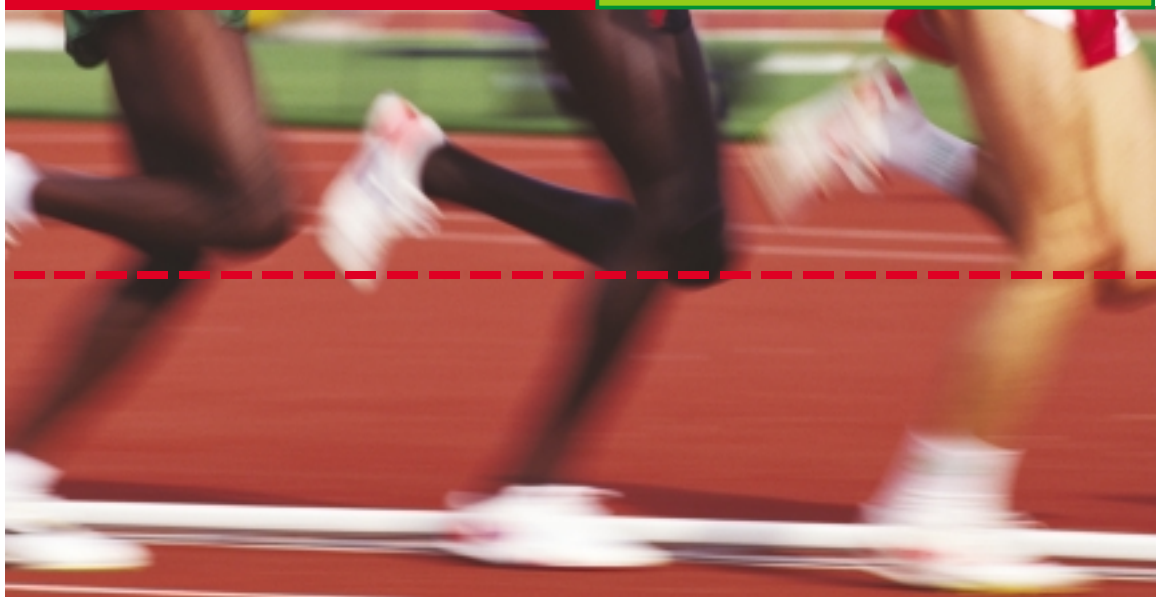
The track surface for every level of training and competition. The wearing layer consists of a high quality, solid polyurethane coating with EPDM granules broadcast into the freshly applied compound. The prefabricated base mat is supplied in rolls, factory made, and is unrolled and laid according to the site layout. This concept guarantees consistency in density, thickness and other physical characteristics. An outstanding slip-resistance and colour stability as well as an excellent level of shock absorbency for field events are the features of Fastrack AG.



Regupol Fastrack PD

The wearing layer consists of a structural spray-coating, a polyurethane compound into which special EPDM granules are premixed. The prefabricated base mat guarantees uniformity and consistent properties. Fastrack PD is the solution for lower budgets but still offers the unique characteristics of the Regupol concept with an excellent rating on all relevant requirements.





Other BSW products: Regupol Athletic Tracks

The complete range for track & field. BSW offers the widest range of surfacing products and concepts worldwide – from surfaces for international competition to recreational and institutional projects. BSW is able to meet specific requirements through the modification of our standard product range. Regupol® athletic tracks from BSW have been installed in numerous sports facilities worldwide. When international events are held on a Regupol® track, the quality of the surface is critical. The quality level of a Regupol® track is the basis for good performances – and BSW is right there when it counts.

BSW GmbH (Berleburger Schaumstoffwerk)

has been manufacturing sports surfacing and other flooring products for over 30 years and has been servicing the sports and leisure market ever since. But that is not all. BSW also offers an extensive range of technical products for the construction industry. With our advanced technology we are also a leader in this segment. Regupol is a registered trademark of BSW. Regupol® is manufactured and promoted by BSW based in Germany and our partners, Dodge-Regupol, Inc. in Pennsylvania covering the north American territory and Regupol-Australia Pty.

www.berleburger.de

Additional information concerning our product portfolio can be found on our website. You can order samples and product literature through our website as well as establishing a personal contact directly with our head office.



BSW
Berleburger Schaumstoffwerk GmbH
P.O. Box 1180
57301 Bad Berleburg (Germany)
Phone ++49 (0) 27 51 / 8 03-0
Fax ++49 (0) 27 51 / 8 03-109
eMail info@berleburger.de
Internet www.berleburger.de

Certified by
DIN EN ISO 9000
DIN EN ISO 14001
OHSAS 18001

BSW reserves the right for technical modifications.