



SPORTS | LEISURE

Regupol®

Athletic Tracks

Power · Dynamics · Durability

Reliable Technology
for 'Track & Field'



www.berleburger.de



Power · Dynamics · Durability

First class facilities will always generate first class performance. Regupol® track surfacing systems, supplied by BSW, have offered ideal physical properties such as, force reduction, energy recovery and durability, for decades. Due to their vertical elasticity, in compliance with the most recent requirements of the DIN standard and IAAF guidelines, our systems are accommodating, comfor-

table and athlete friendly. Another benefit is the slip resistant wearing surface, which results in the desired speed specifically for short distance runners. Due to our in-house computer controlled manufacturing process force reduction can be altered to suit individual project requirements, which is often considered the most important aspect to suit long distance runners. This is achieved

through a combination of various surface textures installed upon shockpads of various thickness and densities. Whenever a practical balance between speed and cushioning is desired, athletic surfacing from BSW should be the first choice; we cater for international competition, training facilities or the casual user. Regupol® tracks are champion for champions.

Reliable Technology for 'Track & Field'

Tracks are built to produce world records and it is our policy that the quality level of the surface is up to world record standards, too. Regupol® systems, supplied and expertly installed by BSW, maintain the highest ranking within the industry. The special surface structure and the excellent level of elasticity are accurately adjusted to the requirements for competition and training. BSW has achieved that combination through a variety of systems and different application procedures.

Traditionally, the 'basemat' is a prefabricated material manufactured under very controlled circumstances on our 'state-of-the-art' equipment. Alternatively, BSW offers a range of 'insitu' systems whereby the rubber granules

are mixed with PUR binder on site – this kind of application is carried out by special mixing equipment and paving machinery.

Those alternative application procedures offer the possibility to modify the elasticity and other physical properties in order to meet specific project requirements. Among our large range of surfaces, we are confident architects, consultants and designers will always be able to find the perfect solution for 'Design & Build' projects. The excellent dimensional stability of our systems, combined with a strong yet flexible adhesion to the subbase, is your guarantee for long-term performance and durability.

The wearing surfaces of all our Regupol® systems traditionally consist of a self-levelling PUR

coating with special EPDM granules broadcast into this compound to achieve a 'granulated surfacing texture', or a PUR/EPDM structural spray coating. The PUR/EPDM topping is permanently bonded to the 'basemat' and withstands heavy-duty use over a long period of time. Thus, the uniform surface structure is constantly guaranteed while the maintenance intervals are reduced to a minimum.

The materials offer a cushioning effect to absorb the shocks if a sudden fall occurs during competition or training.

All these features have made BSW one of the leading suppliers and installers for synthetic track surfacing worldwide.



Regupol®

Regupol® is the material that BSW has been manufacturing for a large range of surfacing systems – our applications include surfacing systems for sports & leisure as well as commercial & fitness flooring. Regupol® is a mix of selected rubber particles and PUR binder. These components are processed in our factory according to the

most recent formulations approved by our in-house laboratory. Regupol® is unique, durable, load bearing, harmless, long lasting and can be recycled. Through project specific production, individual engineering, custom designing and warehousing we are able to provide a fast and suitable solution for every job.

Regupol® Athletic Tracks

provide the athlete with:

- optimised force reduction
- slip resistance
- protection for the athletes
- minimised risk for injuries
- excellent shock absorbancy
- uniform and seamless PUR/EPDM topping
- best possible conditions for world records
- durability

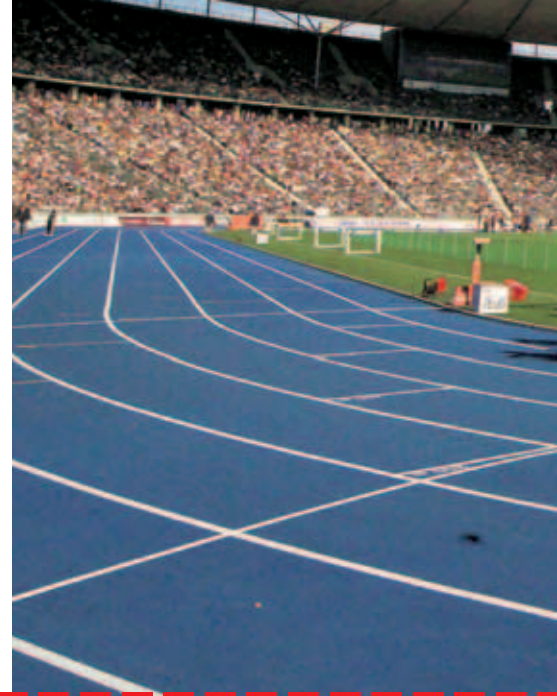
provide the facility management with:

- fast installation supervised by trained and certified technicians
- permanent quality control during production and installation
- reduced maintenance cost
- durability under high stress and intensive use
- spike resistance
- various surface structures
- multi-purpose applications
- waterpermeable or impermeable construction

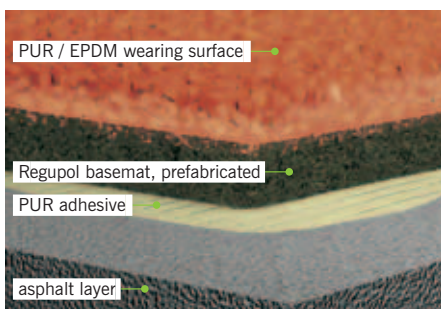
The system variations

With a total of five standard systems BSW presents the largest portfolio for all track & field applications worldwide. Because of the different system characteristics the systems Regupol AG,

Regupol Compact, Regupol PD, Regupol AG-IS and Regupol PD-IS are all unique in their distinguished features. There is always a solution for various specifications.



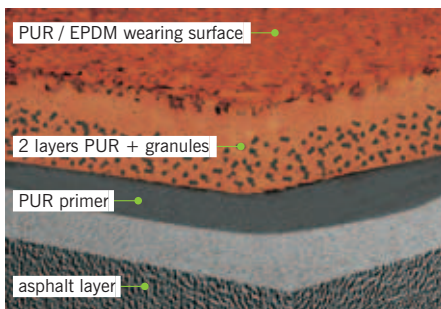
Regupol AG



The traditional system for international competition. The wearing surface consists of an impermeable PUR coating with selected EPDM granules broadcast into the 'freshly' applied PUR compound resulting in a homogeneous and seamless granulated topping. The basemat

is a prefabricated product supplied in rolls and permanently bonded to the subbase with a special PUR adhesive. This combination guarantees uniform physical properties and thickness. Excellent slip resistance and elasticity for all kinds of field events are also a benefit.

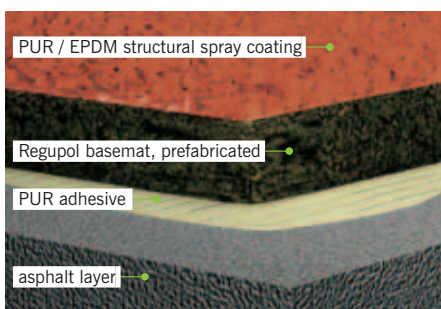
Regupol Compact



This is a high performance surface with a relatively low level of force reduction. The homogeneous and seamless wearing surface is identical to the topping of the Regupol AG system. The entire system consists of three polyliquid layers

resulting in a full-depth PUR structure. This system has been well accepted by all levels of athletes for many years. The easy installation procedure combined with high resilience and low energy loss have made this concept extremely reliable.

Regupol PD



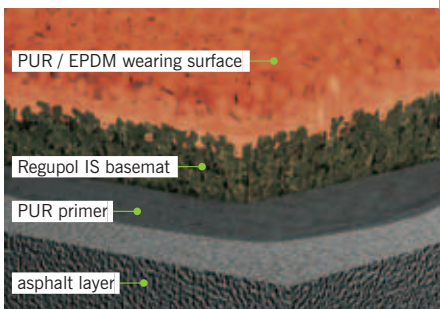
Waterpermeable or impermeable surface for athletic tracks and multipurpose facilities. The wearing surface is a structural spray coating consisting of a special PUR compound premixed with selected EPDM rubber granules.

The prefabricated basemat supplied in rolls always guarantees uniformity and a steady force reduction and elasticity. This system is often considered the most economical solution for institutional projects, recreational and field training facilities.

ATHLETIC TRACKS



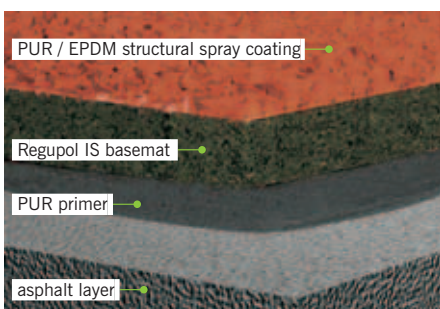
Regupol AG-IS



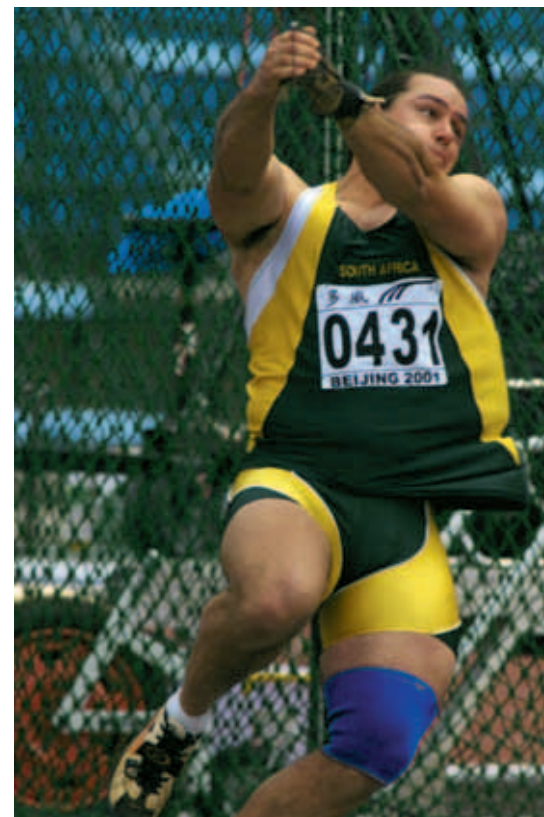
The professional surface featuring a very comfortable level of force reduction similar to the traditional Regupol AG system. It is a 'sandwich-type' surface structure whereby the 'insitu' basemat is installed on site by mixing the rubber granules and the PUR binder before

the actual application which is carried out in the required thickness by special paving machinery. The 'insitu' type installation offers the same benefits in comparison with the Regupol® COMPACT system based upon fitting the surface into certain architectural layouts.

Regupol PD-IS



Generally, the Regupol PD-IS is installed as a permeable system on top of a permeable substructure. The wearing surface is the same than that for the Regupol PD system. It is also a more economical solution and due to its slightly rough surface texture it is a perfect fit for athletic tracks and/or multipurpose courts.



The Applications

Regupol® surfaces have been used for numerous other events, incl. multi-purpose and ball game courts besides their traditional use for track & field.

They are as appropriate for all kinds of applications in the segment of sports & leisure as they have always been for athletic track facilities. Various types of

wearing surfaces, a wide range of formulations and installation procedures are perfectly applicable for all kinds of sports.

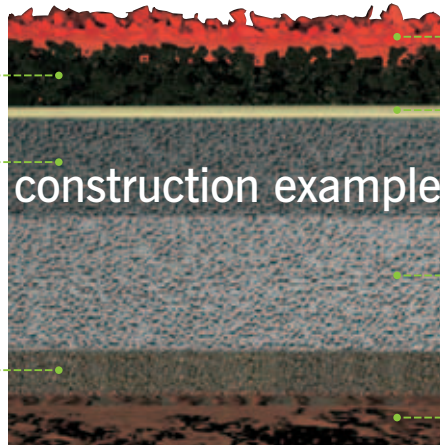
In many stadiums around the world Regupol® tracks have proved to stand the test of time and a quality level that exceeds expectations. The brand name Regupol® is a common term for all those who are responsible for safety, durability

and a reduced level of maintenance of athletic tracks and other sports grounds. Regupol® tracks are the first choice for all different levels: professional competition, training and leisure. All Regupol® systems meet the requirements of the IAAF and the DIN.



| | Regupol AG | Regupol Compact | Regupol PD | Regupol AG-IS | Regupol PD-IS |
|---|------------|-----------------|------------|---------------|---------------|
| International competitions (world championships, Olympic Games) | ● ● ● | ● ● ● | | ● ● | |
| Regional competitions | ● ● ● | ● ● ● | | ● ● | |
| Multi-national competitions | ● ● ● | ● ● ● | | ● ● | |
| National competitions | ● ● ● | ● ● ● | ● | ● ● | ● |
| Training, school, leisure | ● ● ● | ● ● ● | ● | ● ● | ● |

- ● ● IAAF/DIN certified
- ● IAAF/DIN tested
- DIN tested



Regupol basemat

hot-bituminous asphalt layer, 30 mm

support layer/stone foundation

Regupol PUR/EPDM wearing surface

PUR adhesive (except for IS-systems)

hot-bituminous asphalt layer, 40 mm

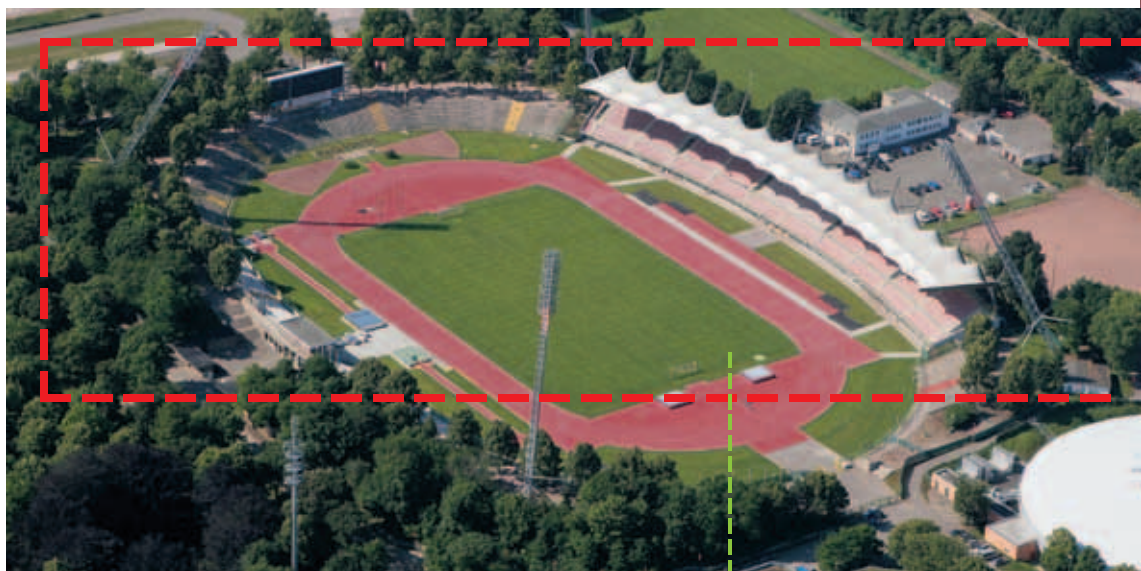
subsoil foundation

construction example

Regupol® tracks are available in the standard colours red and green, other colours upon request. The basemat, whether prefabricated or insitu, can be supplied in various thicknesses. BSW can of course offer additional service necessary for a successful track installation such as the survey and lining, incl. certification. The lines are typically applied using PUR paint specifically developed for synthetic surfaces

– the lines are durable and will last for many years beyond the warranty period. Besides the surfacing products BSW also offers a full range of athletic equipment and accessories such as marking plates, aluminium rails, take-off boards, sports mats, landing mats, hurdles, etc. BSW can provide many years of experience and expertise through aspects of your project. The installation of all Regupol surfaces is

carried out under our own supervision. A large team of trained and certified technicians is available for jobs all round the world.



Regupol®

Also available out of BSW's product portfolio: Regupol Fastrack

The smart solution for the renovation of old track facilities. There is no necessity for reconstructing the subbase which typically is a major cost factor for schools, communities and private institutions. Regupol Fastrack can be installed within a very short period of time – the removal of the existing dynamic subsurface can be eliminated! Regupol Fastrack is the ideal solution for a 'face-lift' of a track oval in a stadium or a training ground while the professional standard of Regupol products is maintained.

BSW GmbH

(Berleburger Schaumstoffwerk)

has been manufacturing sports surfacing and other flooring products for over 30 years and has been servicing the sports and leisure market ever since. But that is not all. BSW also offers an extensive range of technical products for the construction industry. With our advanced

technology we are also a leader in this segment. Regupol® is a registered trademark of BSW. Regupol® is manufactured and promoted by BSW based in Germany and Regupol-Australia Pty.

www.berleburger.de

Additional information concerning our product portfolio can be checked on our website. You can order samples and

literature through our website as well as establishing a personal contact directly with our head office.



Certified according to
DIN EN ISO 9001
DIN EN ISO 14001
OHSAS 18001

BSW
Berleburger Schaumstoffwerk GmbH
Postfach 1180
57301 Bad Berleburg (Germany)
Telephone +49 2751 803-0
Telefax +49 2751 803-109
E-Mail info@berleburger.de
Internet www.berleburger.de



**Made in
Germany**

Manufactured in accordance with highest industrial safety and environmental standards. Award winning manufacturing process.