

**TECU®**  
Copper for Roof  
and Façade Cladding  
*Product Range*



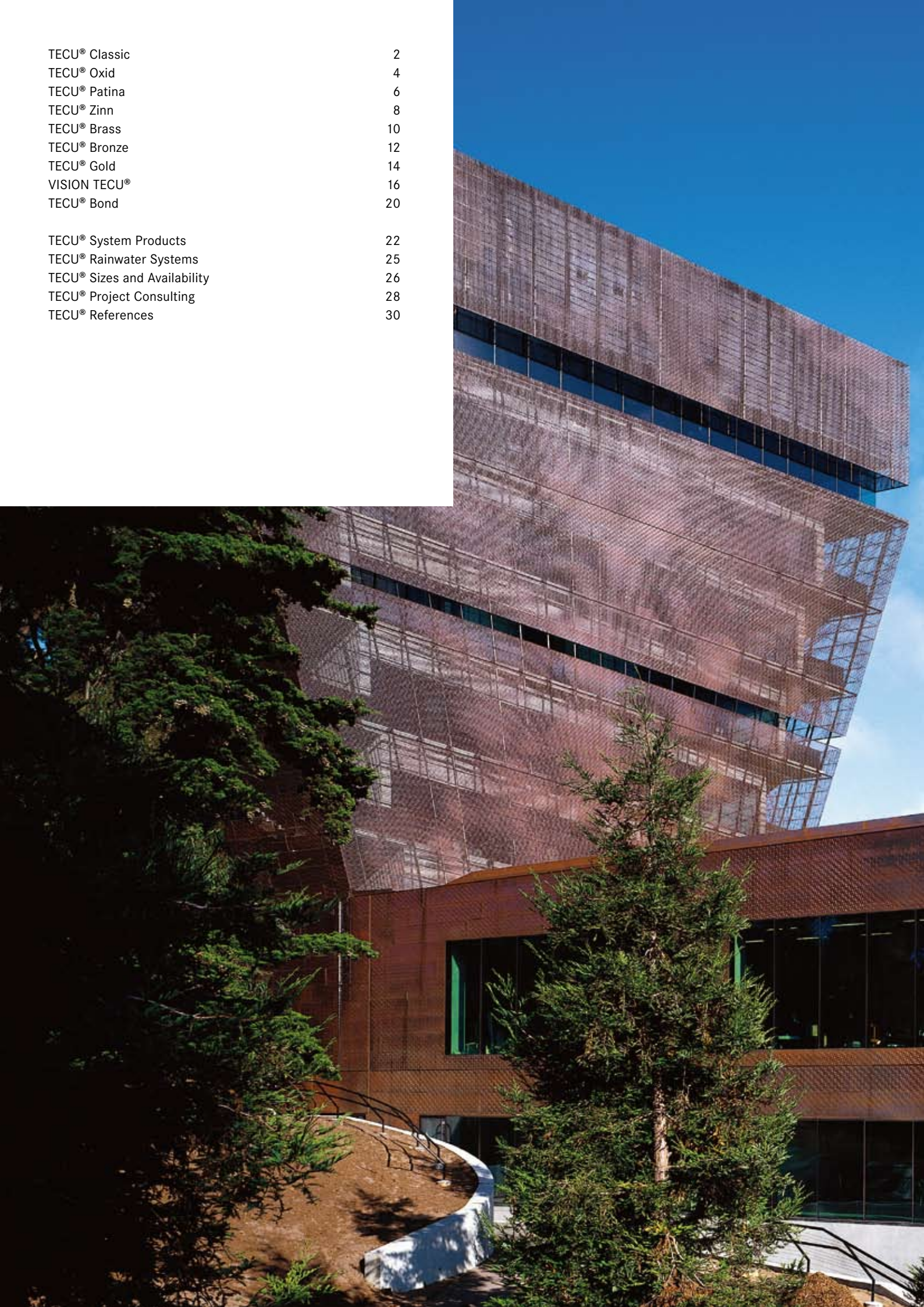
KME Germany AG & Co. KG  
TECU® Product Range  
[GB]





TECU® Classic	2
TECU® Oxid	4
TECU® Patina	6
TECU® Zinn	8
TECU® Brass	10
TECU® Bronze	12
TECU® Gold	14
VISION TECU®	16
TECU® Bond	20

TECU® System Products	22
TECU® Rainwater Systems	25
TECU® Sizes and Availability	26
TECU® Project Consulting	28
TECU® References	30





*The decision to design building cladding with copper leaves plenty of opportunities for creativity. Durable TECU® products from KME offer many unique possibilities. The striking natural surfaces in copper and copper alloys allow for singular design. Prefabricated system elements offer a wide range of solutions, from free-form designs to the simple and economic cladding of larger areas. And so that everything fits together, there is a complete system of rainwater drainage components available.*

**KME**

*Once in place, TECU® products come to life and become even more beautiful over time.*







*Lasting value,  
durable yet changeable*

In the beginning, the architecture grade material is bright red rolled copper. But what follows is an ever-changing spectacle of weather, light and the natural, lively language of the material: After installation on the building, TECU® Classic retains its typical bright red copper colouring for a period of time. Changes are very gradual and not entirely predictable – just like the weather, which, in turn, is solely responsible for copper's continual changes. First, the surface turns matt. Gradually, the material develops an oxide layer to protect it against the effects of weathering. This process brings with it striking colour variations through an entire range of brown tones, offering varying nuances according to change of light and season.

Ultimately, on the sloping surfaces, the colour process yields a robust green patina – as is typical for copper surfaces. This patina lends the cladding its distinctive character, at the same time providing long-lasting protection for decades to come.





*As if touched by nature,  
in magnificent shades of brown*

Time-tested TECU® Classic quality copper with a completely different look: With TECU® Oxid, the initial bright, freshly-installed copper, and the gradual change of colour to shades of brown is simply bypassed. Natural changes on the building start immediately with a brown oxide layer. The process continues as with classical copper: Nature changes the surface through the effects of sun, rain, snow and wind, giving it an exciting life of its own – always unique, typical copper.

TECU® Oxid copper sheets and strips are pre-oxidised on both sides in a patented industrial process that is gentle on the material. The oxide layer is not artificial but results naturally from the copper itself.





*Green copper for immediate creative application –  
all natural, no limits.*

Often the shortest path takes you directly to your goal. When the design demands the power and expressiveness of the patina green typical for copper, then it should be implemented just as required – without waiting for the gradual changes caused by natural weathering. The solution is TECU® Patina – patinated copper for immediate use to satisfy the highest aesthetic demands in building design.

Using a specially developed industrial process, TECU® copper sheets are patinated green on one side. This process causes an oxidised layer to form on the surface of the copper – a process similar to the natural patination that occurs over a long period of time when copper is exposed to atmospheric conditions.

TECU® Patina is always extremely varied, just as you would expect from a natural surface. The many different colour tones and shades eventually blend together, but only gradually. The unique developments occurring in TECU® Patina are exciting – just as modern architecture should be.

**New:**

**TECU® Patina now with TSP surface protection**

*The temporary yet robust transparent layer ensures long-lasting protection. Processing is virtually dust-free. Traces of processing remain practically invisible on the material surface, and even after folding and bending, the patina layer remains in good condition. After installation, the surface develops in the completely natural manner characteristic of copper.*





*Colourful grey:  
elegance and durability*

The elegant understatement of the exquisite matt grey surface harmonises excellently with many other building materials. And the connection between two exceptional metals combines the proverbial longevity of the carrier material with a metallic surface which, although not typical for copper, strikes just the right note.

To manufacture TECU® Zinn, copper strips are specially tinned and surface-treated on both sides. The resulting surface gradually takes on the distinctive matt grey colouring when exposed to weathering.





Copper alloys are exciting new highlights in façade materials – individual, extremely durable and exceptionally lively. As one of the best known copper materials, brass is now available as the new TECU® Brass, created by blending a special alloy of copper and zinc.

The TECU® copper alloys develop their own, unique character when exposed to the atmosphere. Weathering changes the original reddish golden colour of TECU® Brass; after the initial matting the surface takes on a greenish brown tone, which slowly turns greyish brown before evolving into a dark brown-anthracite colour. On sloping surfaces, a distinctive patina layer, typical of classical copper surfaces, develops.

*A new kind of Brass –  
modern and expressive*

TECU® Bronze\_mesh

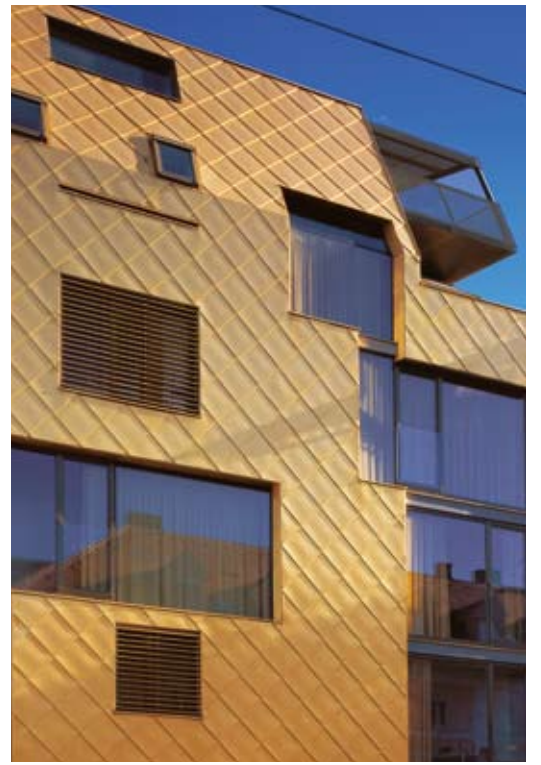




Bronze – an alloy of copper and tin and a synonym for metallic works of art. While artists have long made use of bronze, architects are now also able to make optimum use of the material – for more refinement in façade design.

The original warm reddish-brown colour of TECU® Bronze develops in a distinctive manner through weathering. A brown-red surface oxidation with a brown-grey undertone is typical for this alloy; the material then gradually changes to dark brown anthracite throughout. The subsequent patina coating forms much more slowly than with pure copper.

*Offering architecture new perspectives*





Gold doesn't always have to glitter: TECU® Gold, a new copper-aluminium alloy for façade cladding, turns matt very soon after it has been installed on the building – gradually forming a striking warm golden surface which, although it doesn't glitter, is still unmistakably reminiscent of the valuable precious metal.

Façades clad with TECU® Gold convey a distinctive, pleasing and unique quality. In order to maintain this lasting impression, the surface changes very little over time. Further colour changes due to oxidation processes are hardly noticeable on the façade surfaces.

*Copper and aluminium –  
a combination as good as gold*

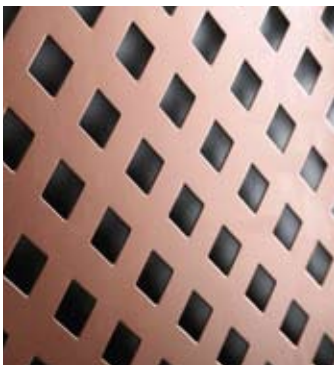
# VISION TECU® \_punch

Perforations offer many new possibilities for individual design with TECU® surfaces. Many different levels of transparency can be created - from almost complete transparency to a subdued translucence. The effect of back-lit facades can be designed very individually by using different TECU® surfaces and a large number of different perforation patterns. There are also virtually no limits to the use of perforated TECU® products as decorative elements indoors.

*New vista:  
The impressive TECU® surfaces  
with individual perforation*

## TECU® Classic\_punch

Square perforation  
Diagonal rows offset



## TECU® Classic\_punch

Round perforation  
Diagonal rows



## TECU® Brass\_punch

Fishbone perforation



## TECU® Patina\_punch

Rectangular perforation  
Straight rows

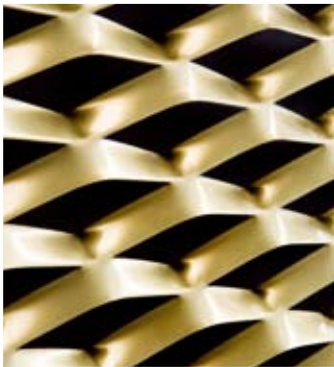




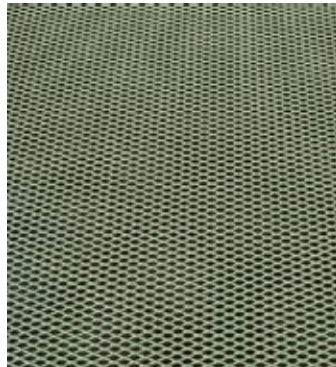
The material is first perforated and then stretched to create a copper rib mesh – a metal curtain with functional aesthetic qualities. The many different textile-like structures of the TECU®\_mesh surfaces provide openness and create a solid barrier, offering both transparency and mechanical protection. TECU®\_mesh surfaces in rib mesh design – for individual and characteristic impressions of light and space.

The even structures of the flat rolled rib mesh of TECU®\_flatmesh offer openness and solidity, the mechanical protection of an open metal skin and the porosity of a semi-transparent curtain. On the building the use of TECU®\_flatmesh brings a pleasant lightness to the façade with the mesh structure seeming to float in front of the background. When installed in front of glass areas TECU®\_flatmesh products offer security in an aesthetic form as well as fascinating impressions from inside and outside.

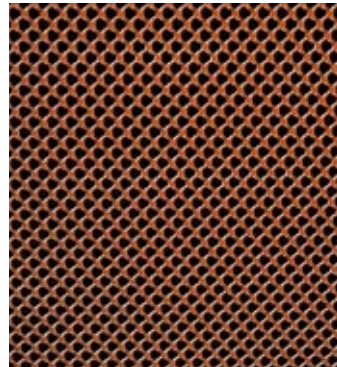
*New structure:  
Copper curtains for  
protective transparency*



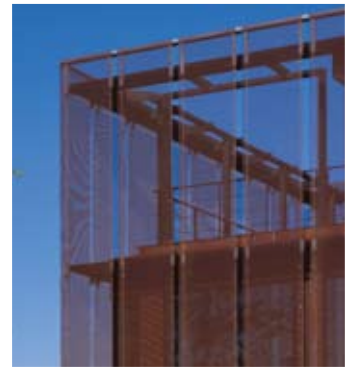
TECU® Gold\_mesh  
TECU® Bronze\_mesh  
(Side 12)



TECU® Patina\_mesh



TECU® Classic\_flatmesh



TECU® Classic\_flatmesh

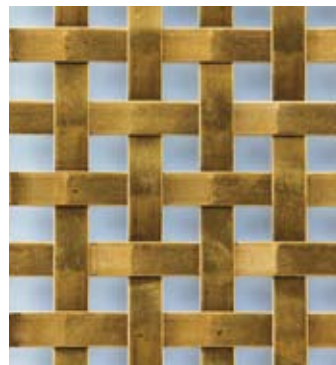
Textile woven structures in metal: the woven copper of TECU®\_weave products combine functionality with aesthetic finesse in a very unusual way. With this additional structure in the surface exteriors walls in particular are given a completely new, unique character. Depending on the weave pattern the woven copper takes on completely new mesh patterns with an individual design and light effects. Depending on the metal bond, the incidence of light and the perspective the material has a transparent, semi-transparent or fully enclosed effect.

*New effect:  
Woven copper surfaces –  
metallic materials for  
architectural applications*

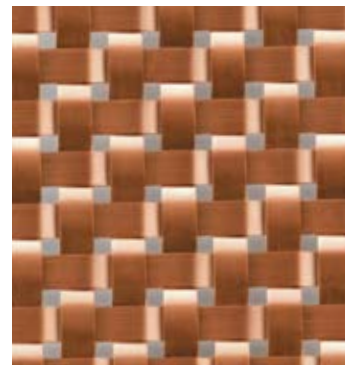
TECU® Gold/Stainless\_weave



TECU® Gold\_weave



TECU® Classic\_weave





# VISION TECU® \_shape

Amorphous structures, wave shapes, organic three-dimensional patterns, spherical impressions in copper: TECU® surfaces are now complemented by a third dimension. For building applications this means livelier, more individual facades with a very expressive presence. The natural copper surfaces now seem to take on a different appearance at different times of the day and with every change in light and shadow. The long-term change in appearance also seems to occur in a different manner from what we are used to: since the natural oxidation process on copper depends on the angle of the surface, the colour changes on three-dimensional surfaces differ considerably.

*New dimension:  
Time and time again new, unexpected,  
fascinating solutions in copper*



**TECU® Brass\_shape**  
Wave, diagonal



**TECU® Classic\_shape**  
Bubbles, scattered

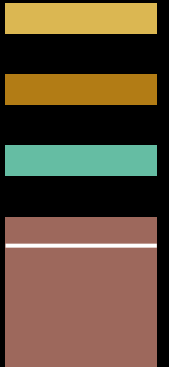


**TECU® Classic\_shape**  
Small bubbles  
scattered





*Bonded with copper:  
creating large surfaces  
fast and perfect*



Cladding large façades and interior areas quickly and economically with TECU® quality copper – without compromising on the outward appearance. Never before have projects been so easy to implement as with TECU® Bond. The new composite material offers all the aesthetic properties of the TECU® surfaces but can be cut to size and installed on large areas much more quickly and easily.

TECU® Bond is extremely even and warp resistant, has an optimised weight, low thermal expansion and high mechanical resistance to wind loads, impact, shock and pressure. The material construction is amazingly simple and efficient: under high pressure, 0.3-mm-thick sheets of TECU® copper are applied onto both sides of a polyethylene core. This creates an extremely robust composite material.

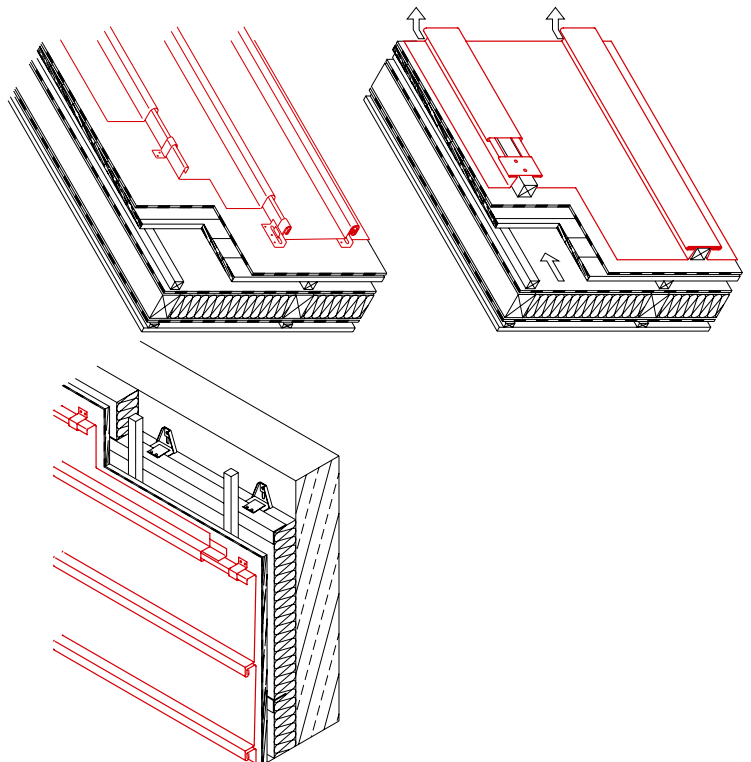
TECU® Bond is prepared and cut to size in the workshop; the sheets are then installed on the building site in no time at all. And to prevent damage to the materials, as can happen in a rush, a protective film is applied to the visible surface in the factory. The film is removed after the sheets have been installed. Thus, TECU® Bond offers elegant solutions at a reasonable cost for many projects such as ventilated curtain walls, fascia, parapet and soffit cladding, roofing and interior work and many more.

# TECU® System Products

## TECU® Sheets and Strips for Seamed and Batten Cap Cladding

Ideal for custom designed free forms as well as the traditional roof and façade construction design: using angle standing seams and batten cap cladding. TECU® products for these types of cladding are available in sheets and strips.

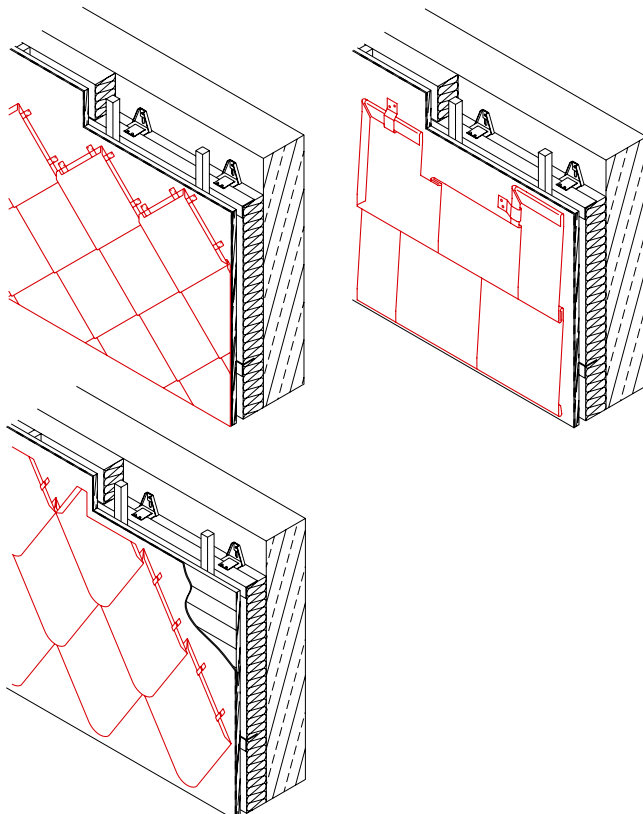
The modern use of rolled copper in facade and roofing, the higher product quality requirements and the development of new, more demanding techniques for metalworking mean that copper has to meet much higher expectations today than ever before. TECU® sheets and strips for facade and roofing are manufactured in accordance with EN 1172 and KME's own strict quality control guidelines. Material tolerances for dimensions and properties are well within or even tighter than standard limits, and further processing by machine or hand is considerably easier.





Besides their special aesthetic qualities, TECU® System Shingles and TECU® System Rhomboids offer decisive economic advantages in façade design: cladding elements are laid simply by hanging them and interlocking them with each other.

The shingles and diamond system shingles have a 180° border on all sides. Two sides are provided with a fold coming forward or with a downstand. The individual elements are available as left or right tiling. All folds and notches are automatically pre-processed in the factory. At the edges, all the usual processing techniques such as bevelling, folding and bending can be used. This ensures that the corners of buildings and connections to other constructional elements such as windows and doors are completely weatherproof.

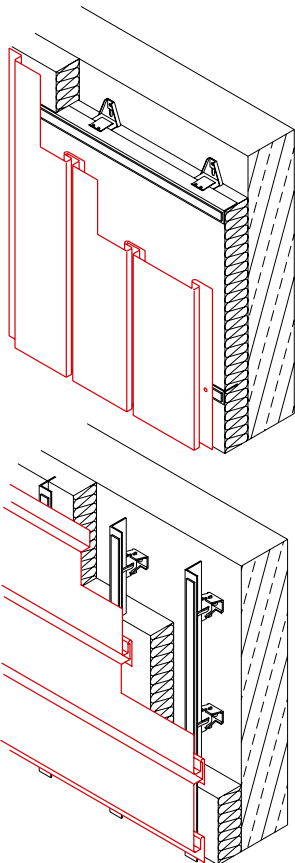


## TECU® Panels

TECU® Panels are two-sided cladding elements, with or without an end base, depending on the construction. Individual lengths are as long as 4,000 mm with a standard width of up to approx. 500 mm. Assembly at the building site is performed according to the tongue and groove principle or by overlapping.

The panels can be assembled in various directions – vertically, horizontally or diagonally. There are three basic forms, depending on the design:

- Slot-in panels laid vertically as a level surface facade cladding
- Slot-in panels laid horizontally as a level surface facade cladding
- Special panels with visible or concealed fixings, laid in various ways, with a level surface or overlapped.

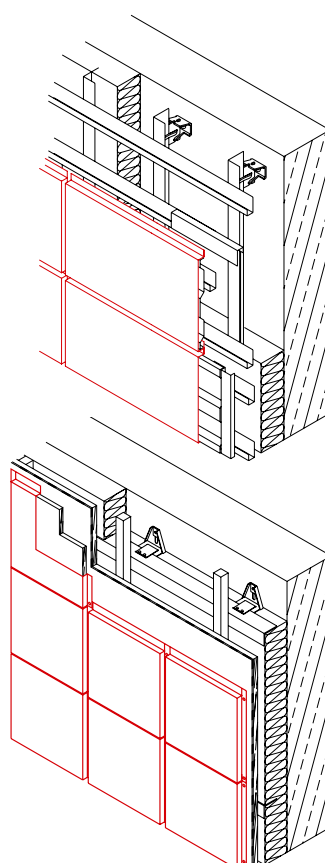


## TECU® Cassettes

TECU® Cassettes are cladding elements with folded edges on all sides available in a range of geometrical proportions from 1:1 to 1:4. They are exclusively pre-profiled to the customer's specifications and/or according to suggestions made by the architect.

Cassette cladding allows a great deal of flexibility concerning formats, the layout of joints and fixing principles. Folded edges on every side allow even larger sheet metal parts to lie even with the cladding surface.

Fixing is usually achieved by riveting, screwing, hidden/subsurface fittings or by means of bolt hooks to fix the cassettes directly to the substrate.





# TECU® Rainwater Systems

TECU® roofing and cladding systems can be supplemented by rainwater system components from KME Architectural Metals GmbH & Co. KG.






Their product range includes








- eaves gutters, half-round (lengths of 3 – 6 m) or
- eaves gutters, box section (lengths of 2 or 3 m)
- gutter brackets
- downpipes
- rainwater pipe brackets
- standpipe
- accessories







# TECU® Sizes and Availability

## TECU® Sheets






TECU® Classic								
	Format/Thickness	0,5	0,6	0,7	1,0	1,2	1,5	2,0
	1000 x 2000		•	•	•		•	•
	1000 x 3000		•	•	•		•	•
	1250 x 2500		•	•	•		•	•

TECU® Patina								
	Format/Thickness	0,5	0,6	0,7	1,0	1,2	1,5	2,0
	600 x 2000			•				
	600 x 3000			•				
	670 x 2000		•	•				
	670 x 3000		•	•				
	800 x 3000			+				
	1000 x 2000		•	•	+	+	+	
	1000 x 3000		•	•	•	+	+	





Manually patinated longer sheets available on request

TECU® Brass								
	Format/Thickness	0,5	0,6	0,7	1,0	1,2	1,5	2,0
	670 x 2000			•				
	670 x 3000			•				
	1000 x 2000			•	•			
	1000 x 3000			•	•			+

Burnishing by KME Architectural Metals GmbH & Co. KG available on request

TECU® Bronze								
	Format/Thickness	0,5	0,6	0,7	1,0	1,2	1,5	2,0
	670 x 2000			•	•		+	
	670 x 3000			•	•		+	
	1000 x 2000			•	•		+	
	1000 x 3000			•	•		+	
	1250 x 2500			+	+		+	












Burnishing by KME Architectural Metals GmbH & Co. KG available on request




TECU® Gold								
	Format/Thickness	0,5	0,6	0,7	1,0	1,2	1,5	2,0
	670 x 2000	+		•	•			
	670 x 3000	+		•	•			
	1000 x 2000			+	+			
	1000 x 3000			+	+			




- available
- + on request



Other dimensions and availability available on request.  
Further information: Project Consulting, Tel. +49 541 321-2000  
All measurements in mm.




## TECU® Strips


TECU® Classic						
	Width/Thickness	0,5	0,6	0,7	1,0	1,5
	200		•	•		
	250		•	•		
	333		•	•		
	400		•	•		
	500		•	•		
	600		•	•		
	670		•	•		
	800		•	•		
	1000		•	•		
	1220		•	•		
	1250		•	•		

TECU® Oxid						
	Width/Thickness	0,5	0,6	0,7	1,0	1,5
	500		•	•		
	600		•	•		
	670		•	•		

TECU® Zinn						
	Width/Thickness	0,5	0,6	0,7	1,0	1,5
	500		+	+		
	600		•	•		
	670		•	•		

TECU® Brass						
	Width/Thickness	0,5	0,6	0,7	1,0	1,5
	670			+	+	
	1000			+	+	

TECU® Bronze						
	Width/Thickness	0,5	0,6	0,7	1,0	1,5
	670			+	+	+
	1000			+	+	+
	1250			+	+	+

TECU® Gold						
	Width/Thickness	0,5	0,6	0,7	1,0	1,5
	1000	+		+	+	



## VISION TECU®

## TECU® System TECU® Bond

### \_punch (all perforation types)

Formats*	670 x 2000	1000 x 2000
Thickness	1.0/1.2/1.5/2.0	1.0/1.2/1.5/2.0
TECU® Classic	+	+
TECU® Oxid**	+	+
TECU® Patina	+	+
TECU® Zinn***	+	+
TECU® Brass	+	+
TECU® Bronze	+	+
TECU® Gold	+	+

\* Other formats available on request

\*\* max. Thickness 1,5

\*\*\* max. Thickness 0,7

### \_mesh (rib mesh)

Formats	on request	on request
Thickness	1.0	1.2
TECU® Classic	+	+
TECU® Oxid	+	+
TECU® Patina	+	+
TECU® Brass	+	+
TECU® Bronze	+	+
TECU® Gold	+	+

### \_flatmesh (expanded metal)

Formats	1000 x 2000	1000 x 3000
Thickness	0.7 / 1,0	0,7 / 1.0
TECU® Classic	+	+
TECU® Patina	+	+

### \_weave (all strip sizes)

Thickness	1.0
TECU® Classic	+
TECU® Oxid	+
TECU® Patina	+
TECU® Brass	+
TECU® Bronze	+
TECU® Gold	+

### \_shape (all types)

Formats	670 x 2000/3000	1000 x 2000/3000	1250 x 2000/3000
Thickness	0,7-1.5	0,7-1.5	0,7-1.5
TECU® Classic	+	+	+
TECU® Oxid	+	+	+
TECU® Patina	+	+	+
TECU® Brass	+	+	+
TECU® Gold	+	+	+

### TECU® System Shingles

Formats	600 x 430	600 x 600
	Rectangular	Square
TECU® Classic	•	•
TECU® Oxid	•	•
TECU® Patina	•	•
TECU® Zinn	•	•
TECU® Brass	+	+
TECU® Bronze	+	+
TECU® Gold	+	+

Manufacture and sale:  
KME Architectural Metals GmbH & Co. KG

### TECU® System Rhomboids

Formats	518 x 830	518 x 758
	Sharp	Round
TECU® Classic	•	•
TECU® Oxid	•	•
TECU® Patina	•	•
TECU® Zinn	•	•
TECU® Brass	+	+
TECU® Bronze	+	+
TECU® Gold	+	+

Manufacture and sale:  
KME Architectural Metals GmbH & Co. KG

### TECU® Façade Tiles

Format	200 x 200
TECU® Classic	•
TECU® Gold	+

Manufacture and sale:  
KME Architectural Metals GmbH & Co. KG

### TECU® Bond

Nominal thickness	4,0
Thickness of copper 0.3 on both surfaces (alternatively 0.5)	
Format 1000 x 3000	
TECU® Bond Classic	•
TECU® Bond Patina	+
TECU® Bond Brass	+
TECU® Bond Gold	+

### TECU® Panels

Lengths up to 4000 Widths up to 400	
TECU® Classic	•
TECU® Oxid	•
TECU® Patina <sup>1</sup>	•
TECU® Zinn	•
TECU® Brass	•
TECU® Bronze	•
TECU® Gold	•

<sup>1</sup> Lengths up to 3000  
Manufacture and sale:  
KME Architectural Metals GmbH & Co. KG

### TECU® Cassettes

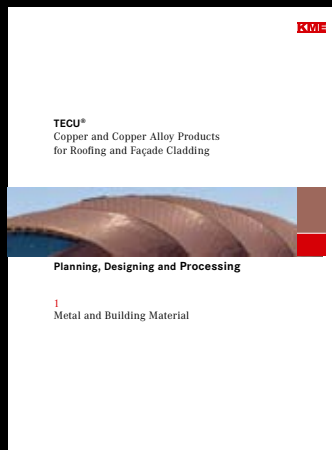
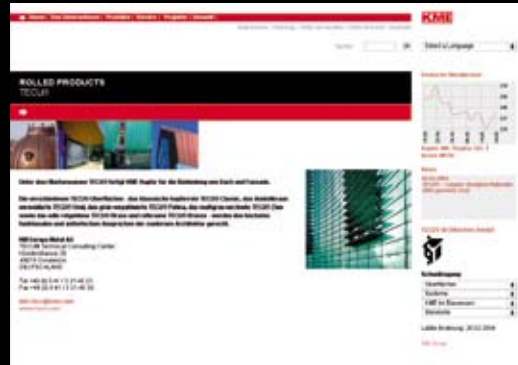
Custom manufacturing	
TECU® Classic	•
TECU® Oxid	•
TECU® Patina	•
TECU® Zinn	•
TECU® Brass	•
TECU® Bronze	•
TECU® Gold	•

Manufacture and sale:  
KME Architectural Metals GmbH & Co. KG

### TECU® Profiled sheets

Corrugated and trapezoidal profiles Formats available on request	
TECU® Classic	+
TECU® Oxid	+
TECU® Patina	+
TECU® Zinn	+
TECU® Brass	+
TECU® Bronze	+
TECU® Gold	+

Manufacture and sale:  
KME Architectural Metals GmbH & Co. KG



## Service

TECU® products from KME are made to meet the demands placed on them by all kinds of different constructions. Many of their recognized, quality features are a result of close communication with expert customers in the building industry.

TECU® stands for a combination of high quality and complete service. As the world's leading processor and refiner of copper and copper alloy products, KME provides its technical advisory service to developers, architects, clients and roofers throughout Europe and beyond.



Information and consultation provided by TECU® Project Consulting ensure skilful use of materials, and make possible the realisation of perfect and aesthetically demanding solutions with TECU® products. The reference publication *TECU® – Planning, Designing and Processing*, is a rich source of detailed information – now available in five languages.



### Seminars and training courses

For everyday work in an architect's office, practical knowledge about the professional use of high-quality TECU® products is just as valuable as having reliable information about legal and organisational issues or new technologies. KME invites anyone with an interest in these issues to take part in special seminars for architects, which are held regularly in the **KMEForum** in Osnabrück.

The aesthetic and economic superiority of TECU® products is fully exploited when the material is used in a qualified manner in accordance with technical requirements. KME's TECU® Training Centre in Osnabrück offers multi-level professional seminars in which theoretical and practical processing techniques are taught at various levels of difficulty. Students apply their skills in practical work on models. The training events take place in the new **KMEForum** in Osnabrück, which is fully equipped with all modern training facilities, and offers a practice-oriented setting.

Courses are offered throughout Europe in collaboration with trade organisations and associations. This service is part of TECU® quality offered by KME.





# TECU® References

## TECU® Classic



**De Young Memorial Museum, San Francisco, USA**  
Herzog & de Meuron Architekten, Basel, CH  
*A. Zahner Co. Architectural Metals, Kansas City*  
TECU® Classic



**Service Centre Theresienwiese, Munich, D**  
Volker Staab Architekten, Berlin  
*Regensburger Metallbau, Regensburg*  
TECU® Classic



**Poppodium Mezz, Breda, NL**  
(EEA) Erick van Egeraat associated architects, Rotterdam  
*SV Metaaldak Specialist BV, Beek en Donk / Brouwers Zink BV, Maasmechelen*  
TECU® Classic



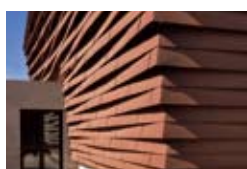
**Offices and industrial building, Koblach, A**  
AIX Architects, Feldkirch  
*Peter GesMBH + CoKG, Koblach*  
TECU® Classic



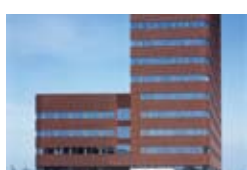
**Officer's quarters of the Royal Marines of the Netherlands, Den Helder, NL**  
Van Herk & de Kleijn Architecten BV, Amsterdam  
*Ridder BV, Hoorn*  
TECU® Classic



**Casa Travella, Castel San Pietro, CH**  
Aldo Celoria, Balerna  
*Antonio Corti SA, Caslano*  
TECU® Classic



**Fitness Center, Sesto Fiorentino, I**  
Studio architetto Fabio Capanni, Florence  
*Idroflorence S.r.l., Badia a Settimo Scandicci (FL)*  
TECU® Classic



**PSG Copper Tower Nordre, Copenhagen, DK**  
Arkitema K/S, Copenhagen  
*NCC Construction A/S, Hellerup*  
TECU® Classic

## TECU® Classic



**Harbour Control Tower, Lisbon, P**  
Gonçalo Byrne, G.B. Arquitectos, Lisbon  
*Zn-Revestimentos de Zinco Lda., Maia*  
TECU® Classic



**THE CORE, Information Centre for the Eden Project, Cornwall, GB**  
Nicholas Grimshaw & Partners, London  
*Richardson Roofing Co. Ltd., Staines*  
TECU® Classic



**ESA - École Supérieure d'Art, Clermont-Ferrand, F**  
Architecture Studio, Paris  
*Raimond SA, Saint-Julien de Condelles*  
TECU® Classic



**Private Residence, Madrid, E**  
Bernalte y León Asociados, Ciudad Real  
*METAZINCO®, Madrid/Olloniego (Asturias)*  
TECU® Classic



**Kulturhus De Bijenkorf, Borne, NL**  
MAS architectuur BV, Hengelo  
*Dakcentrum+, Beilen*  
TECU® Classic



**Cultural Center, Chateau-Rouge, Annemasse, F**  
Cabinet R. Plottier, Lyon  
*Ets. Fourquet, Perouges*  
TECU® Classic



**Harbour Terminal, Barcelona, E**  
Grupo JG, Barcelona / BEA International, Miami (Florida), USA  
*METAZINCO®, Madrid/Olloniego (Asturias)*  
TECU® Classic

**Object**  
Architects  
Copper Contractor  
Cladding

## TECU® Patina

## TECU® Patina



**Galway-Mayo Institute of Technology, Galway, IRL**  
Murray O'Laoire Architects, Cork  
*Let it Rain Roofing Ltd., Galway*  
TECU® Patina



**Villa ArenA (Restaurant), Amsterdam, NL**  
Virgile & Stone Associates Ltd., London  
in cooperation with Benthem Crouwel Architecten  
*Leebo bouwsystemen BV, Drunen*  
TECU® Patina



**Maggie's Highlands Cancer Caring Centre at Raigmore Hospital, Inverness, GB**  
Page & Park Architects, Glasgow  
*W B Watson Ltd., Stewarton*  
TECU® Patina, TECU® Oxid



**Peckham Library, London, GB**  
Alsop & Störmer, London  
*Clevecio, Enfield*  
TECU® Patina



**Pilgrimage Church Padre Pio, San Giovanni Rotondo, I**  
Renzo Piano Building Workshop, Genoa  
*WAL S.r.l., Bregnano (CO)*  
TECU® Patina



**Centro Stampa Quotidiani, Brescia, I**  
TECNE S.r.l., Brescia  
*Santinato, Castiglione delle Stiviere (MN)*  
TECU® Patina



**Entrance to University Library, Debrecen, H**  
János Golda, János Megyik, Gábor Szenderffy, Budapest  
*Szolnok KAS Kft, Szolnok*  
TECU® Patina



**"Boscotondo", Helmond, NL**  
Adolfo Natalini Architetti, Florence  
Architectenburo C. Schrauwen, Amsterdam  
*Crombach Dakafwerking BV, Wittem*  
TECU® Patina



**Office and shop building "KAI 13", Düsseldorf, D**  
Döring Dahmen Joeressen Architekten, Düsseldorf  
*Zitzen GmbH, Mönchengladbach*  
TECU® Patina



**"Thunderbird" House, Poole, GB**  
Seven Developments Ltd., Poole  
*Pace Roofing Ltd., Romsey*  
TECU® Patina



**Bank of Friesland, Leeuwarden, NL**  
Van Tilburg Ibelings von Behr architecten, Capelle a/d IJssel  
*Hankel's Wommels in cooperation with C.J. Ockeloen VOF, Amsterdam*  
TECU® Patina



**Underground station Hounslow West, London, GB**  
Michael Watkins (Partner), London, (Acanthus, Lawrence and Wrightson Architects)  
*Broderick Structures Ltd., Woking*  
TECU® Patina



**Residential building, Purmerend, NL**  
Roy Gelders Architecten, Amsterdam  
*Ridder Dak- en Wandsystemen BV, Hoorn*  
TECU® Patina



**Private Residence, NL**  
Charles Slot Bureau Ruimtelijke Vormgeving, Bergen  
*PBK Technische Installaties BV, Alkmaar*  
TECU® Patina



**Yefei's Creative Street, Shanghai**  
Will Alsop Architects, London, GB;  
U/Jiang Architects & Engineers, Shanghai  
*Hanchang Industrial Development Co., Shanghai*  
TECU® Patina, TECU® Oxid, TECU® Bronze



**Orto Botanico, Lago Cavazzo, Interneppo (UD), I**  
Alberto Antonelli, Gemona del Friuli (UD)  
*Alberto de Cecco, Osoppo, (UD)*  
TECU® Patina

# TECU® References

## TECU® Oxid



**Production and office building, Baar, CH**  
Burkart, City of Baar Building Department Baar;  
Barkow Leibinger Architekten, Berlin  
*Gebr. Baur AG, Baar*  
TECU® Oxid



**Forum, Amsterdam, NL**  
Atelier PRO, The Hague  
*C.J. Ockeloen VOF, Amsterdam*  
TECU® Oxid



**Ferryman's House, Fæne Gods, Middelfart, DK**  
Schmidt, Hammer & Lassen A/S, Aarhus  
*Eddie Clement A/S, Ejby*  
TECU® Oxid



**Roche Forum, Buonas, CH**  
Scheitlin + Syfrig, Luzern  
*Gebr. Baur AG, Baar*  
TECU® Oxid



**University Stuttgart, Stuttgart, D**  
Rolf Loew, Stuttgart  
*Dangel GmbH, Lenningen*  
TECU® Oxid



**Motorway Toll Collection Area, Lucca, I**  
Ettore Piras Architetto, Genova  
*Trenkwalder S.r.l., Ovada (AL)*  
TECU® Oxid



**Production and office building of Elektro Graf, Dornbirn, A**  
Baumschlager & Eberle, Lochau  
*Güther GmbH, Feuchtwangen, D*  
TECU® Oxid



**Parque de la Relajación, Torrevieja, E**  
Toyo Ito & Associates, Tokyo, J;  
Toyo Ito Spain & Associates, Alicante, E  
*Vicente Escolano, Novelda, Alicante*  
TECU® Oxid

## TECU® Zinn



**VCNON Traffic control centre, Wolfheze, NL**  
De Architecten Cie, Amsterdam  
*Verkoelen Dakbedekkingen BV, Beegden*  
TECU® Zinn



**Private Residence, Herrliberg, CH**  
R. Baenziger, Zurich  
*Hersperger, Meilen (Façades);*  
*Studer AG, Volketswil (Plumbing)*  
TECU® Zinn



**St. Mary of the Angels, Rotterdam, NL**  
Mecanoo architecten, Delft  
*Leidekkersbedrijf Jobse BV, Middelburg*  
TECU® Zinn



**Administrative building of WeberHaus, Rheinau/Linxs, D**  
Dipl.-Ing. Günter Hermann, Stuttgart  
*Wittenauer GmbH, Sasbach*  
TECU® Zinn



**Haus am Fluss (House by the river), DGF Stoess AG, Eberbach/Neckar, D**  
Dipl.-Ing. Günter Hermann, Stuttgart  
*Güther GmbH, Feuchtwangen*  
TECU® Zinn



**Japan Restaurant "My Sushi", Milano, I**  
Studio di Architettura Clerici, Gallizia Tutucci, Milano  
*Copermont S.r.l., Clusone (BG)*  
TECU® Zinn

**Object**  
Architects  
*Copper Contractor*  
Cladding



TECU® Brass  
TECU® Bronze  
TECU® Gold

VISION TECU®  
TECU® Bond



**Chelsea FC Academy, Cobham, GB**  
AFL Architects, Manchester  
*Richardson Roofing Co. Ltd., Staines*  
TECU® Brass



**Chiesa di San Giacomo, Laives (BZ), I**  
Höller & Klotzner Architetti, Merano (BZ)  
*MetallRitten S.r.l., Collalbo (BZ)*  
TECU® Brass



**UEC – Urban Entertainment Centre, Almere, NL**  
Will Alsop Architects, London  
*Ridder Dak- en Wandsystemen BV, Hoorn*  
TECU® Brass



**Cimitero Trescore, I**  
Ing. Augusto Zambelli, Trescore Balneario (BG);  
Arch. Basilia Barcella, Bergamo  
*EFFEGI Costruzioni S.r.l., Castelli Calepio (BG)*  
TECU® Bronze



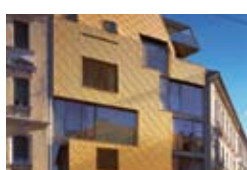
**Le Safran festival hall, Brie Comte Robert, F**  
S.C.P.A. Sémon-Rapaport Mandataire de L'Equipe,  
Brie Comte Robert  
*DUPRE, Saintes*  
TECU® Gold



**Koningshof, Maassluis, NL**  
Hans Goverde, Kraaijvanger Urbis, Rotterdam  
*MSH Installatie- en Dakdekkersbedrijf BV, Schiedam*  
TECU® Gold



**Haus Metzner, Residential and Care Centre for the Aged, Cremlingen-Gardessen, D**  
Jörg Baumeister, m3xh, Braunschweig  
*Musche GmbH, Magdeburg*  
TECU® Gold



**Residential Building Grazbachgasse, Graz, A**  
INNOCAD Planung und Projektmanagement  
GmbH, Graz  
*Steinbauer, Judenburg*  
TECU® Gold



**Office building of the International Ice Hockey Federation, Zurich, CH**  
Tilla Theus und Partner AG, Zurich  
*Scherrer Söhne AG, Zurich*  
TECU® Classic\_flatmesh



**InnovationsCampus, Wolfsburg AG, Wolfsburg, D**  
O.M. Architekten BDA, Braunschweig  
*Bisping GmbH & Co., Münster*  
TECU® Patina\_mesh



**BTB Bank, Innsbruck, A**  
Hanno Vogl-Fernheim, Innsbruck  
*Spenglerei & Glaserei Anker, Hall*  
TECU® Bronze\_mesh



**Private Residence, Affoltern am Albis, CH**  
Deon AG, Luzern  
*W.O.B. GmbH, Wolfenschiessen*  
TECU® Classic\_mesh



**Residential Building "Le Galilée", Rennes, F**  
Chouzenoux et Associés, Rennes  
*SABM, Guichen*  
TECU® Classic\_mesh



**switch+, Münster, D (2007)**  
modulorbeat, Münster  
*BSW Anlagenbau, Everswinkel, D*  
*rückwerk, Münster*  
TECU® Gold\_punch



**Hotel Spa Castillo de Gorraiz, Gorraiz, E**  
Arquitectos Asociados, Navarra, E  
TECU® Gold/Stainless\_weave



**Private Residence, Nuremberg, D**  
Haid+Partner Architekten+Ingenieure, Nuremberg  
*Schlosserei Spenglerei Straßl, Arnstorf*  
TECU® Bond

**KME Group S.p.A.**

Via dei Barucci 2  
50127 FIRENZE  
ITALY  
www.kme.com

**KME Germany AG & Co. KG**

Postfach 33 20  
49023 OSNABRÜCK  
Klosterstraße 29  
49074 OSNABRÜCK  
GERMANY  
Fon +49 (0)541 321-2000  
Fax +49 (0)541 321-2111  
www.kme.com  
info-tecu@kme.com

**KME Italy S.p.A.**

Via Corradino d'Ascanio, 4  
20142 MILANO  
ITALY  
Fon +39 02 89388-206/-244/-452  
Fax +39 02 89388-478  
www.kme.com  
info-tecu-italy@kme.com

**KME France S.A.S.**

11 bis, rue de l'Hôtel de Ville  
92411 COURBEVOIE CEDEX  
FRANCE  
Fon +33 (0)1 47896-849  
Fax +33 (0)1 47896-932  
www.kme.com

**KME Spain S.A.**

Ctra. de Sabadell B - 140, km5  
Sta. Perpètua de Mogoda  
08130 BARCELONA  
SPAIN  
Fon +34 93 5747090  
Fax +34 93 5747091  
www.kme.com  
info-iberica@kme.com

**KME Yorkshire Limited**

Severn House, Prescott Drive  
Warndon Business Park  
WORCESTER  
WR4 9NE  
UNITED KINGDOM  
Fon +44 (0)1905 751800  
Fax +44 (0)1905 751801  
www.kme.com  
info-yct@kme.com

**KME Architectural Metals**

**GmbH & Co. KG**  
Eichendorffweg 10  
48268 GREVEN  
GERMANY  
Fon +49 (0)2575 309-0  
Fax +49 (0)2575 309-25  
www.kme.com  
info-metalle@kme.com

**KME America Inc.**

1000 Jorie Boulevard, Suite 111  
OAK BROOK, Illinois 60523  
USA  
Fon +1 (0)630 990-2025  
Fax +1 (0)630 990-0258  
www.kme.com  
info-america@kme.com

**KME Asia Pte. Ltd.**

51 Geylang Lorong 17  
#06-01  
Superior Industrial Building  
SINGAPORE 388571  
SINGAPORE  
Fon +65 6337-8671  
Fax +65 6337-8571  
www.kme.com  
info-asia@kme.com

**KME Austria**

**Vertriebsgesellschaft m.b.H.**  
Slamastraße 48  
Postfach 128  
1232 WIEN  
AUSTRIA  
Fon +43 (0)1 6167986-0  
Fax +43 (0)1 6167986-36  
www.kme.com  
info-at@kme.com

**NV KME Benelux SA**

Leuvenbaan 3  
1820 STEENOKKERZEEL  
BELGIUM  
Fon +32 (0)2 720-1889  
Fax +32 (0)2 720-8780  
www.kme.com  
info-benelux@kme.com

*Netherlands:*

J.E. van Nieuwkoop  
P/a Postbus 146  
3300 AC DORDRECHT  
NETHERLANDS  
Fon +31 (0)78 6212991  
Fax +31 (0)78 6212048  
www.kme.com  
info-nl@kme.com

**KME Czech Republic s.r.o.**

nám. Sitná 31 05  
27201 Kladno  
CZECH REPUBLIC  
Fon +42 (0)312 608250  
Fax +42 (0)312 608251  
www.kme.com  
info-cz@kme.com

**KME Danmark A/S**

Landbrugsvej 8  
5260 ODENSE S  
DENMARK  
Fon +45 65 916410  
Fax +45 65 916411  
www.kme.com  
info-dk@kme.com

*Sweden:*

KME Danmark A/S, Sweden  
Box 118  
64723 MARIEFRED  
SWEDEN  
Fon +46 15 910612  
Fax +46 15 910613  
www.kme.com  
info-s@kme.com

**KME Hungaria Színesfém Kft.**

Andor u. 47-49  
VI. em. 616-618  
1119 BUDAPEST  
HUNGARY  
Fon +36 (0)1 2059775  
Fax +36 (0)1 2059776  
www.kme.com  
info-hu@kme.com

**KME Polska Sp. z o.o.**

ul. Potocka 14  
01-652 WARSZAWA  
POLAND  
Fon +48 (0)12 4116370  
Fax +48 (0)12 4116370  
www.kme.com  
info-polska@kme.com

**KME (Suisse) SA**

Moosstrasse 2  
Postfach  
8803 RÜSCHLIKON  
SWITZERLAND  
Fon +41 (0)43 3882000  
Fax +41 (0)43 3882001  
www.kme.com  
info-ch@kme.com

Case postale 111  
Av. de Châteleine 91a  
1219 CHÂTELEINE-GENÈVE  
SWITZERLAND  
Fon +41 (0)22 9790660  
Fax +41 (0)22 7966610  
www.kme.com  
info-ch@kme.com

Rolled Roofing



Institut Bauen  
und Umwelt e.V.

® = registered trademark

All changes reserved.

Owing to limitations in printing technology, the colours reproduced in this brochure should be regarded as approximate equivalents to the colours described.

0309.050.0806