

CONSTRUCTION

Regupol®

# Keraflex

The frost resistant  
surface for balcony and patio

Quick and easy to install,  
low structural height.

# Keraflex

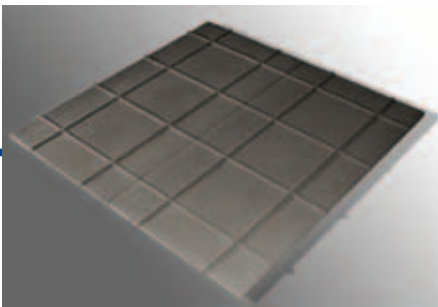
Keraflex is patented.

## The frost resistant balcony surface

With Keraflex, BSW has developed a frost resistant balcony surface which drastically simplifies balcony refurbishment. Keraflex consists of the

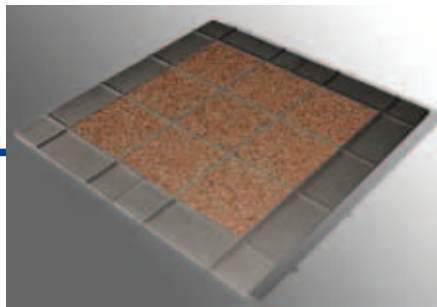
systems Keraflex FB and Keraflex XT. Both systems can be fitted quickly on the old, damaged structure after the balcony has been re-sealed. This avoids

high-cost work processes, reducing the refurbishing time to a minimum.



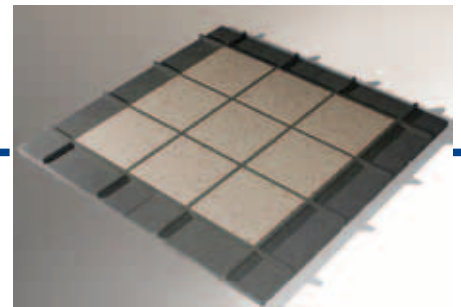
### The basic panels

Keraflex consists of a water-permeable basic panel made of rubber granules. The basic panels are fitted directly on the sealed balcony surface. They form the elastic foundation for Keraflex.



### Keraflex XT

In Keraflex XT, marble granules mixed with binder are worked into the webs of the basic panels. This results in an attractive balcony surface. The webs of the basic panels look like tile joints.



### Keraflex FB

In Keraflex FB, stonewear tiles are adhered between the webs of the basic panels. This creates a surface with outstanding properties such as frost resistance, long service life and top quality appearance, just like Keraflex XT.

**Low structural  
height**

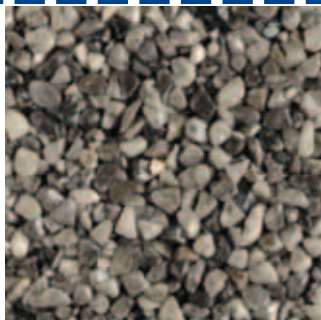
Keraflex XT only 20 mm  
Keraflex FB only 31 mm



# Keraflex XT



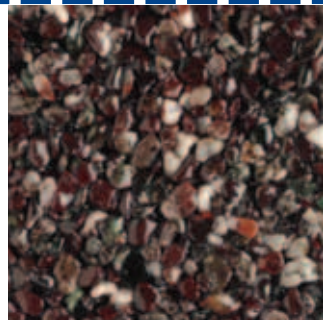
Foggy grey



Vario grey



Vario green



Purple-and-white



Rosé



Brownny orange

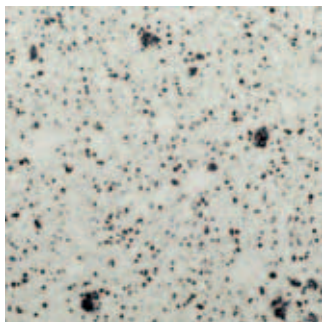


Brownny red

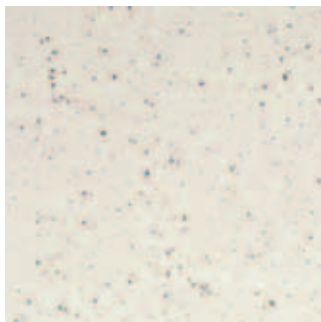


Autumn red

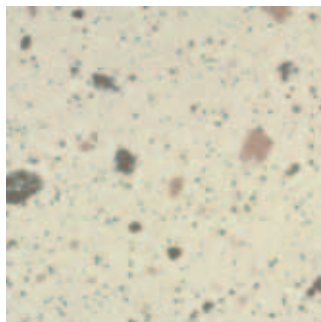
# Keraflex FB



Antarctic



Chalk



White Vario-rosé



Graphit

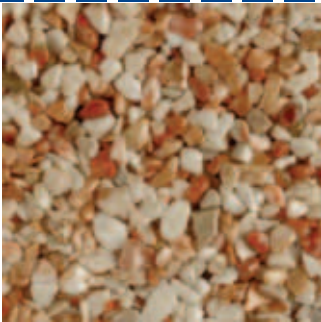
Illustrations in original size. The colours can differ from the original for printing reasons.



Keraflex FB and XT are reliably frost resistant, because both systems have an open 3D structure with elastic components, so that there can be no build-up of ice pressure.

Keraflex XT has a structural height of only 20 mm. That means the system can be installed practically everywhere. 16 different marble granules are available, or even corresponding mixtures on request.

Illustrations in original size. The colours can differ from the original for printing reasons.



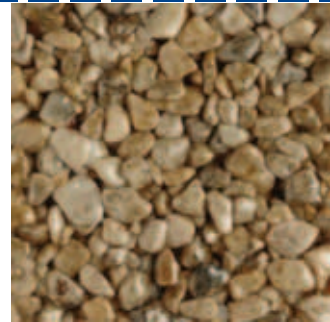
Terracotta-and-white



Ochre yellow



Colorful brown



Earth brown



Yellow-and-white



Dark beige



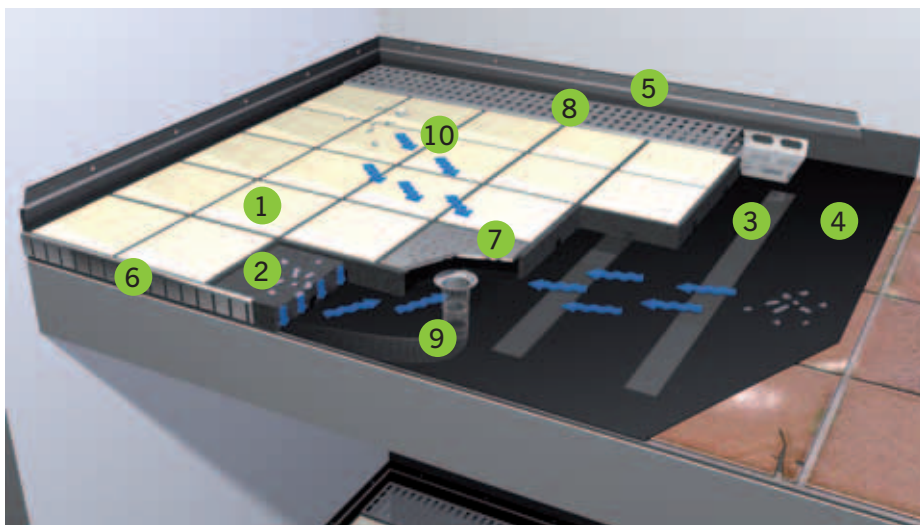
Beige



Mélange



Sahara



1. Stonewear tiles or marble granules
2. Keraflex basic panel
3. Buthyl rubber adhesive tape
4. Balcony surface
5. Wall joining strip

6. Perforated edging corner
7. Perforated corner
8. Drain channel
9. Water pipe
10. Draining water





## The advantages

- completely frost resistant
- low structural height
- ready-made to a large extent
- simple installation
- very easy to fit
- high impact sound insulation
- stipulated exact joint pattern
- water-permeable with drainage grooves on the underneath
- lightweight
- suitable for refurbishment and new constructions
- essentially maintenance-free
- easy to clean
- top quality appearance
- wide range of colours

## Possible uses

- Fast, low-cost refurbishment of balconies and patios
- Also suitable for new constructions
- Sales and presentation areas: Keraflex FB is simply laid loosely on the existing floor surface. At the end of the presentation, Keraflex FB is quickly removed and can be used again elsewhere.
- Exhibition stands: quickly fitted, easily removed, other inlays can also be used (wood, metal; glass)
- Swimming pool surrounds: non-slip plastic tiles are also available on request

## Keraflex XT

<b>Individual format</b>	244 x 244 x 7 mm per granules surface
<b>Slip resistance</b>	Class R9
<b>Format</b>	
<b>Basic panel</b>	Covered size approx. 1,000 x 500 mm
<b>Colours</b>	black, grey
<b>Total thickness</b>	approx. 20 mm
<b>Packaging</b>	on pallets
<b>Weight</b>	approx. 25 kg/m <sup>2</sup>
<b>Noise reduction</b>	approx. 23 dB
<b>Accessoires</b>	Metal grids and grooves, perforated corner angles also available.

## Keraflex FB

<b>Individual format</b>	197 x 197 x 15 mm per tile
<b>Slip resistance</b>	Class R9
<b>Format</b>	
<b>Basic panel</b>	8 tiles per basic panel, covered size approx. 828 x 414 mm
<b>Colours</b>	black, grey
<b>Total thickness</b>	approx. 31 mm
<b>Packaging</b>	on pallets
<b>Weight</b>	approx. 45 kg/m <sup>2</sup>
<b>Noise reduction</b>	approx. 23 dB
<b>Accessoires</b>	Metal grids and grooves, perforated corner angles also available.

**Regupol®**



Regupol® is the material used by Berleburger Schaumstoffwerk GmbH (BSW) to produce a wide range of floor systems for sport, fitness and leisure. Regupol® is a mixture of rubber and polyurethane. The rubber is processed in BSW's production facilities according to various

different formulations in line with the specific requirements. Regupol® products are versatile, long-life, durable and completely recyclable. Individually manufactured to order, customised finishing and storage provide fast problem solutions for specific application problems.

**Also in BSW's programme:**

**Floor coverings**

BSW floor coverings have been specially developed for commercial and sales surfaces, together with exhibition stands, working areas and all possible applications where the floor is exposed to heavy loads. BSW floor coverings are extremely resistant to mechanical impact, are anti-slip and safe to walk on. They are available in a multitude of different colours and patterns which can also be combined to individual taste.

**BSW GmbH**

**(Berleburger Schaumstoffwerk)**

has been using Regupol® and Regufoam® to manufacture materials for the building and construction industry for more than 30 years. This includes the construction protection mats which are known throughout the world, together with impact noise insulation, vibration dampening, safety tiles and floor coverings. But BSW can do much more besides. Together with its comprehensive range for the construction industry, BSW also offers a wide range of products for sports facilities. Here

again BSW is a market leader in this sector too. Regupol® and Regufoam® are registered trademarks of BSW. Regupol® and Regufoam® are manufactured and sold by BSW in Germany and Regupol Australia Pty.

**[www.berleburger.de](http://www.berleburger.de)**

More information about our other products can be found on our website. Here you can also order product samples on-line, consult a list of references and contact your BSW advisor directly.



Certified according to  
**DIN EN ISO 9001**  
**DIN EN ISO 14001**  
**OHSAS 18001**

**BSW**  
Berleburger Schaumstoffwerk GmbH  
Postfach 1180  
57301 Bad Berleburg (Germany)  
Telephone +49 2751 803-123  
Telefax +49 2751 803-159  
E-Mail [info@berleburger.de](mailto:info@berleburger.de)  
Internet [www.berleburger.de](http://www.berleburger.de)



**Made in  
Germany**

Manufactured in accordance  
with highest industrial  
safety and environmental  
standards. Award winning  
manufacturing process.

# Keraflex FB

## Technical Details



### Keraflex FB

	Elastic tile version	Stone effect tile version
<b>Individual format</b>	240 x 240 x 7 mm for each tile	197 x 197 x 15 mm for each tile
<b>Anti-slip</b>	class C	class R 9
<b>Delivery format</b>	8 tiles per base panel to cover area of approx. 1.000 x 500 x 24 mm	8 tiles per base panel to cover area of approx. 828 x 414 x 31 mm
<b>Total thickness</b>	approx. 25 mm	approx. 32 mm
<b>Packaging</b>	palletised	palletised
<b>Weight</b>	approx. 13 kg/m <sup>2</sup>	approx. 45 kg/m <sup>2</sup>
<b>Noise reduction</b>	approx. 28 dB	approx. 25 dB